

Spontaneous Pneumothorax

Presenting Symptoms

- Chest Pain
- Dyspnea
- Hypoxemia (<94%)
- Cough w/ Chest Pain

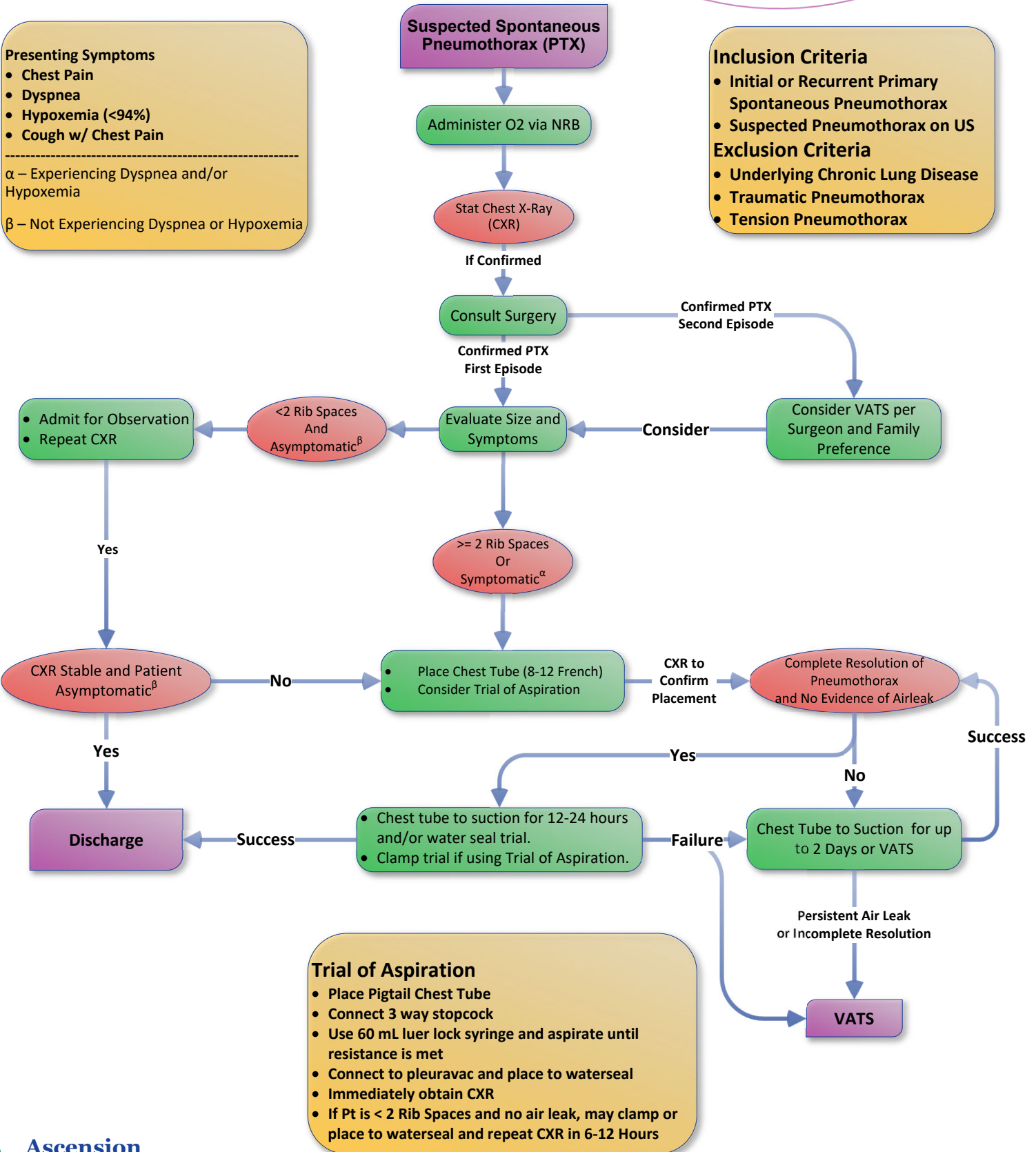
α – Experiencing Dyspnea and/or Hypoxemia
 β – Not Experiencing Dyspnea or Hypoxemia

Inclusion Criteria

- Initial or Recurrent Primary Spontaneous Pneumothorax
- Suspected Pneumothorax on US

Exclusion Criteria

- Underlying Chronic Lung Disease
- Traumatic Pneumothorax
- Tension Pneumothorax



Trial of Aspiration

- Place Pigtail Chest Tube
- Connect 3 way stopcock
- Use 60 mL luer lock syringe and aspirate until resistance is met
- Connect to pleuravac and place to waterseal
- Immediately obtain CXR
- If Pt is < 2 Rib Spaces and no air leak, may clamp or place to waterseal and repeat CXR in 6-12 Hours