

Community-Acquired Pneumonia ED Pathway

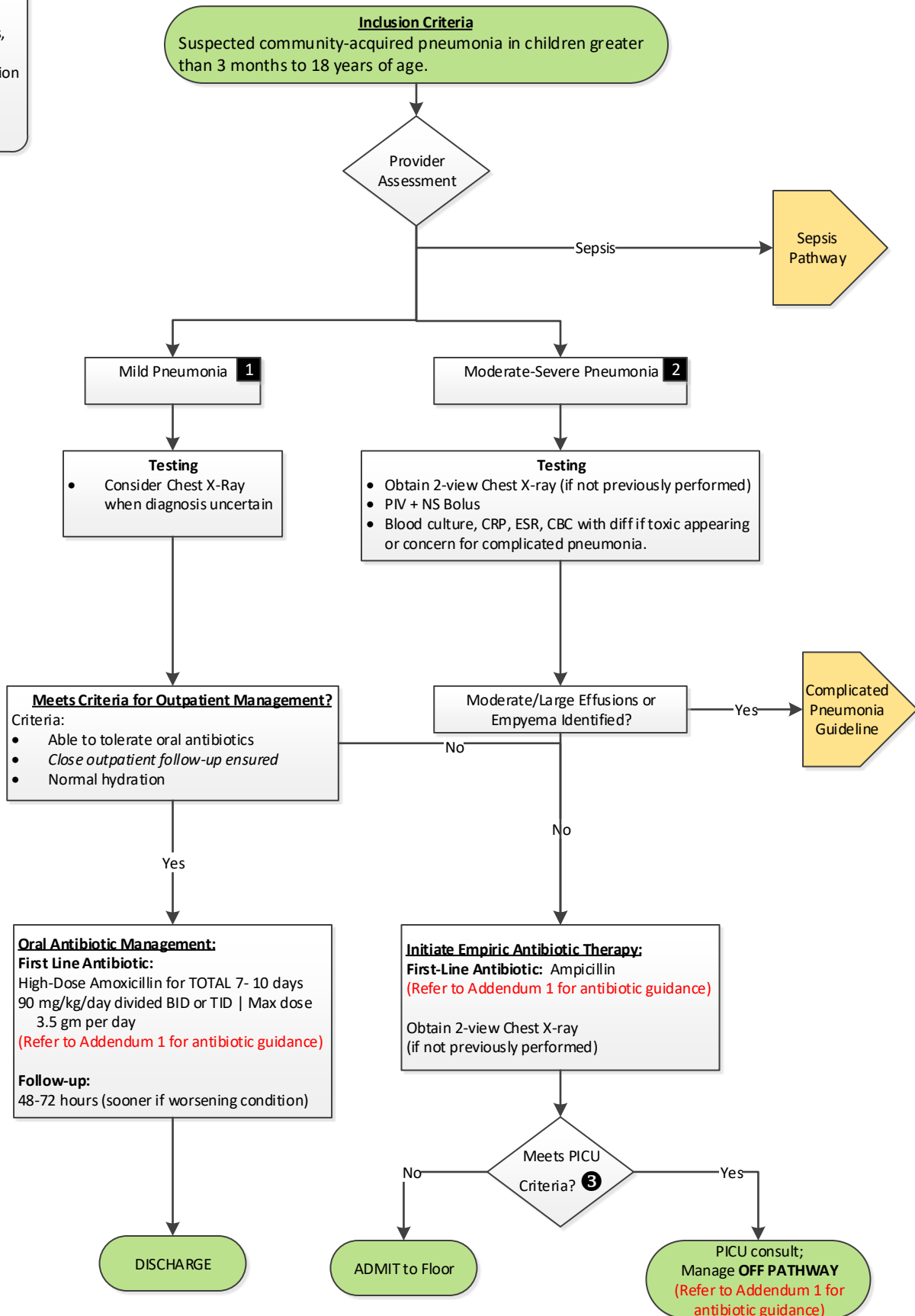
Evidence Based Outcome Center

- EXCLUSION CRITERIA**
- Cystic Fibrosis
 - Chronic lung disease
 - Immunodeficiency
 - Immunosuppression
 - Moderate to large or complex effusions, lung abscess or pneumatocele
 - Sickle Cell Disease
 - History of feeding difficulties or aspiration
 - Chronic co-morbidities
 - Tracheostomy
 - If Suspected Viral Etiology and no suspicion of bacterial coinfection

- Mild Pneumonia Criteria 1**
- Normal to Mild WOB
 - Oxygen Saturations \geq 90% RT

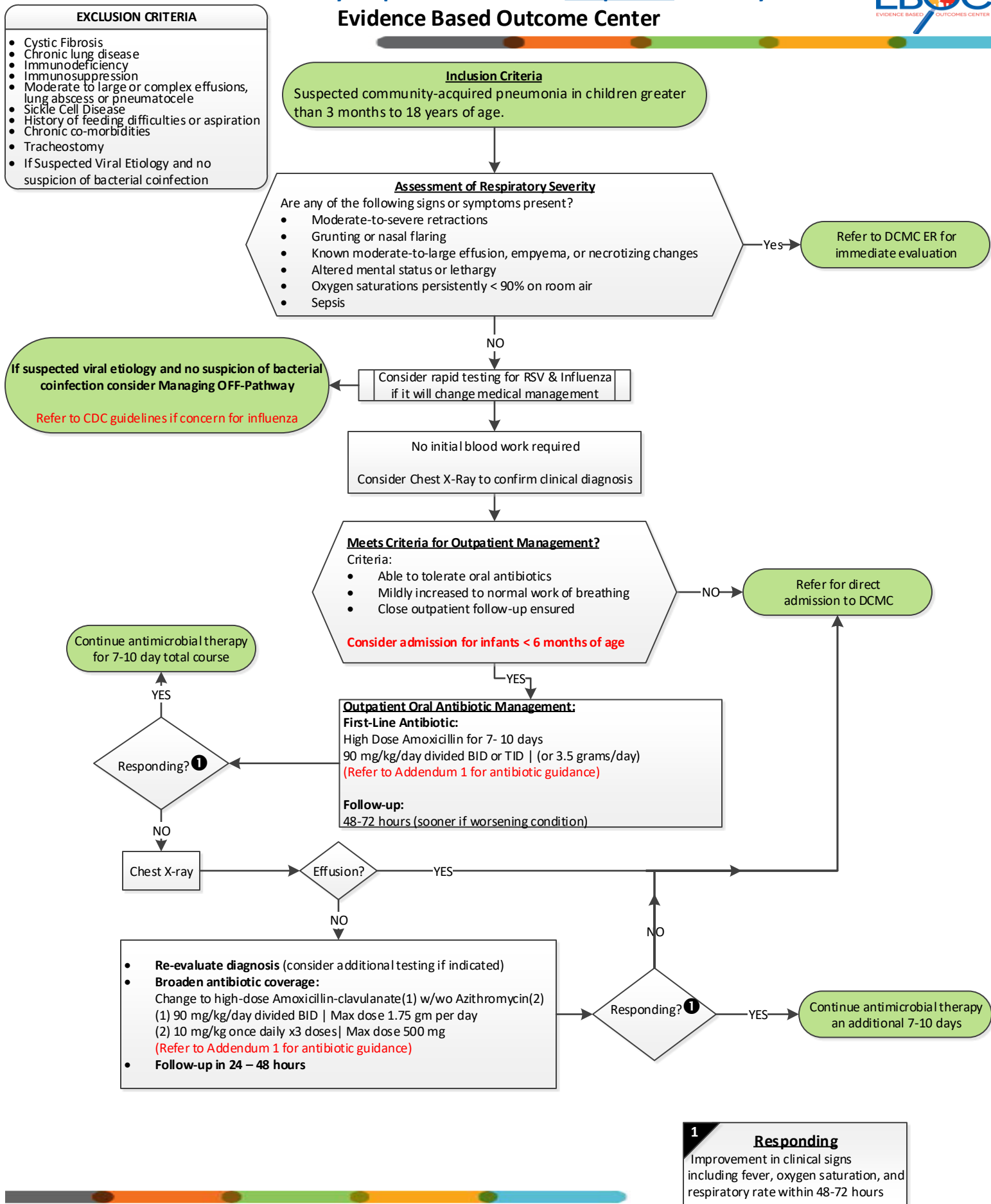
- Moderate/Severe Pneumonia Criteria 2**
- Moderate-to-severe retractions
 - Grunting or nasal flaring
 - Altered mental status or lethargy
 - Oxygen saturations persistently $<$ 90% on room air
 - Known moderate-to-large effusion, empyema, or necrotizing changes
 - Failure of outpatient antibiotic therapy (No improvement in 48-72 hours on appropriate therapy OR significant worsening on appropriate therapy)

- Severe/ PICU Criteria 3**
- $FiO_2 \geq 0.5$
 - Sepsis
 - Impending respiratory failure
 - Altered mental status



Community-acquired Pneumonia Outpatient Pathway

Evidence Based Outcome Center



1 Responding
Improvement in clinical signs including fever, oxygen saturation, and respiratory rate within 48-72 hours

Community-Acquired Pneumonia Inpatient Pathway

Evidence Based Outcome Center

