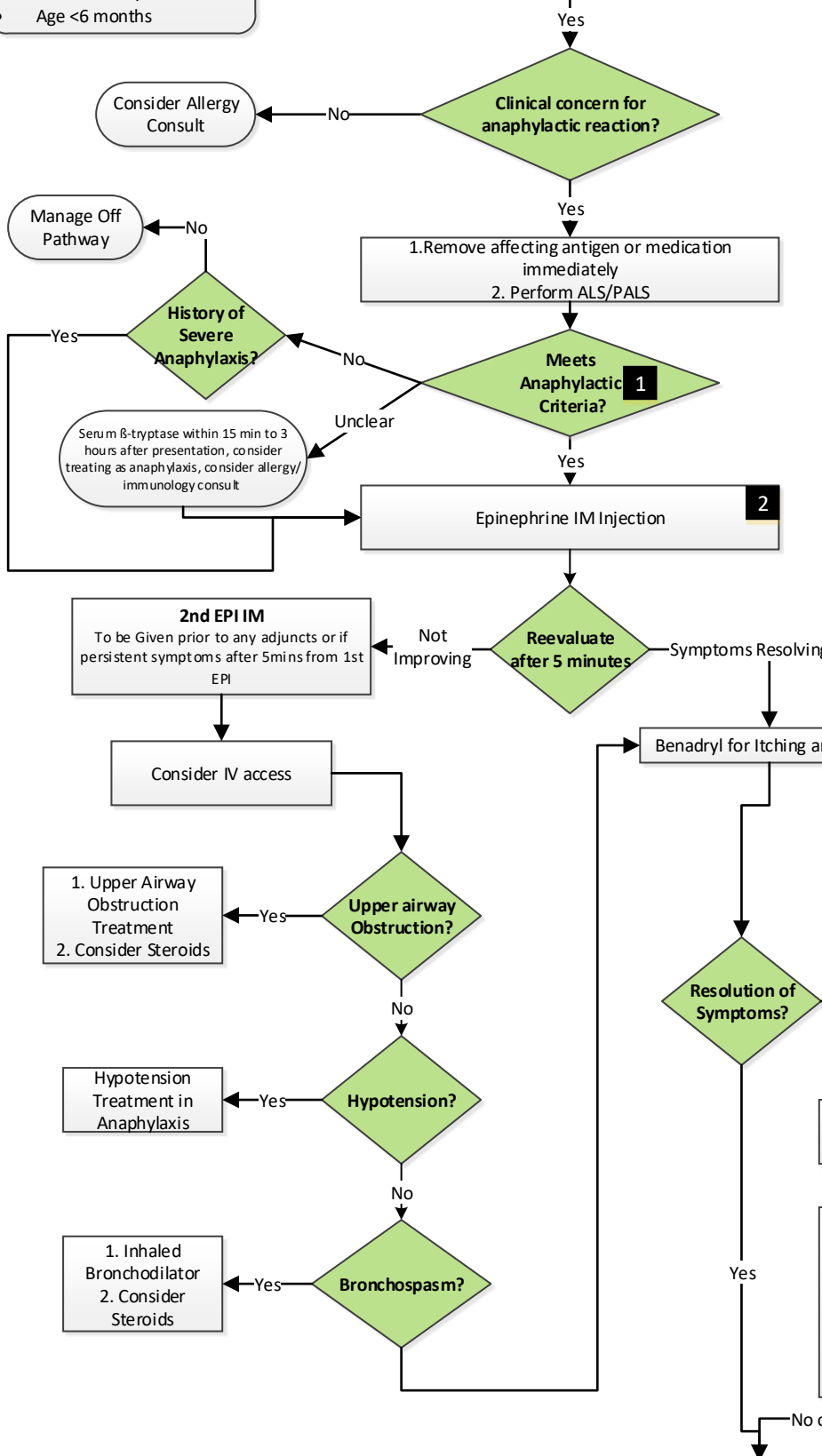


# Anaphylaxis Pathway

## EXCLUSION CRITERIA

- Pregnancy
- History of severe airway abnormality, surgery, or tracheostomy
- Age <6 months

Acute Allergic Reaction and Anaphylaxis (>6 months) – Dell Childrens



## Anaphylaxis Diagnosis Criteria

### Criteria 1

- Acute onset of an illness (minutes to hours) with involvement of the skin, mucosa, or both (eg. generalized hives, pruritus or flushing, swollen lips-tongue-uvula)
- AND AT LEAST 1 OF THE FOLLOWING
  - Respiratory compromise (dyspnea, wheezing, stridor, hypoxia)
  - Reduced BP or associated symptoms of end-organ dysfunction (hypotonia, syncope, incontinence)

### Criteria 2

- 2 or more of the following that occur rapidly (minutes to hours) after exposure to a LIKELY allergen
  - Involvement of the skin-mucosa (generalized hives, itch-flush, swollen lips-tongue-uvula)
  - Respiratory compromise (dyspnea, wheezing, stridor, hypoxia)
  - Reduced BP or associated symptoms (hypotonia, syncope, incontinence)
  - Persistent gastrointestinal symptoms (abdominal pain, vomiting)

### Criteria 3

- Reduced BP after exposure to a patient's KNOWN allergen

## Epinephrine IM Injection Dosage

Outside hospital = Prescribe EpiPEN	ED/Inpatient = Weight based dosing using 1mg/mL solution
< 25 kg: 0.15mg (EpiPen Jr.) IM PRN	0.01 mg/kg IM q 5-15 min PRN (Max 0.3mg if < 13 years, 0.5mg if ≥ 13 years)
≥ 25 kg: 0.3mg (EpiPen) IM PRN	

## Red Flags

- History of biphasic or severe reactions
- Progression of / or persistent symptoms
- History of severe asthma
- Patient with 1 ICU admission and/or 3 IP admissions per year
- Current asthma flare
- Hypotension during ED stay
- Requires >1 Epinephrine dose
- Requires fluid bolus
- Upper airway obstruction i.e. stridor

## Discharge Criteria

- 1.) Min 4 hour obs after 1st epinephrine given
- 2.) 100% receive plan to receive EPI Pen
- 3.) All patients receive standard hospital discharge instructions and epinephrine auto-injector training (See "DCMC Anaphylaxis Discharge Instructions for Families")
- 4.) Assess risk factors for biphasic or prolonged anaphylaxis (refer to box 3)

Discharge