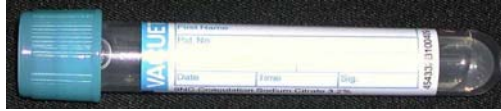


Test Tubes, Blood Collection

Listed in Order of Draw*

Blue top tube

Must be filled to exhaust of vacuum. Mix gently after collection. Primarily used for Prothrombin (Coumadin) testing.



Specimen Container Code **B**

Yellow top tube

Use tubes containing Solution A unless otherwise directed. Mix gently after collection. Most tests using this tube have specific processing/transport requirements.



Specimen Container Code **ACD**

Plain red top tube

Does not contain gel barrier. Primarily used for therapeutic drug monitoring and drugs of abuse.



Specimen Container Code **PR**

Vacurette® gel barrier tube

with red and yellow ringed top. Other brands may be rejected. Mix gently after collection. Primarily used for Chemistry Panels.



Specimen Container Code **SST**

Green top tube

Sodium heparin anticoagulant. Mix gently after collection.



Specimen Container Code **GNS**

Lavender top tube

EDTA K3 anticoagulant. Mix gently after collection. Primarily used for CBC's.



Specimen Container Code **LAV**

Gray top tube

Sodium fluoride anticoagulant. Mix gently after collection. Primarily used for glucose testing.



Specimen Container Code **GRY**

* Order of draw refers to the proper sequence of tube collection to minimize possible cross contamination of anticoagulant found in various tubes.



**CONSOLIDATED
LABORATORY SERVICES**

St. Vincent's HealthCare

**For all your laboratory needs
308-5600**

REV: 0114