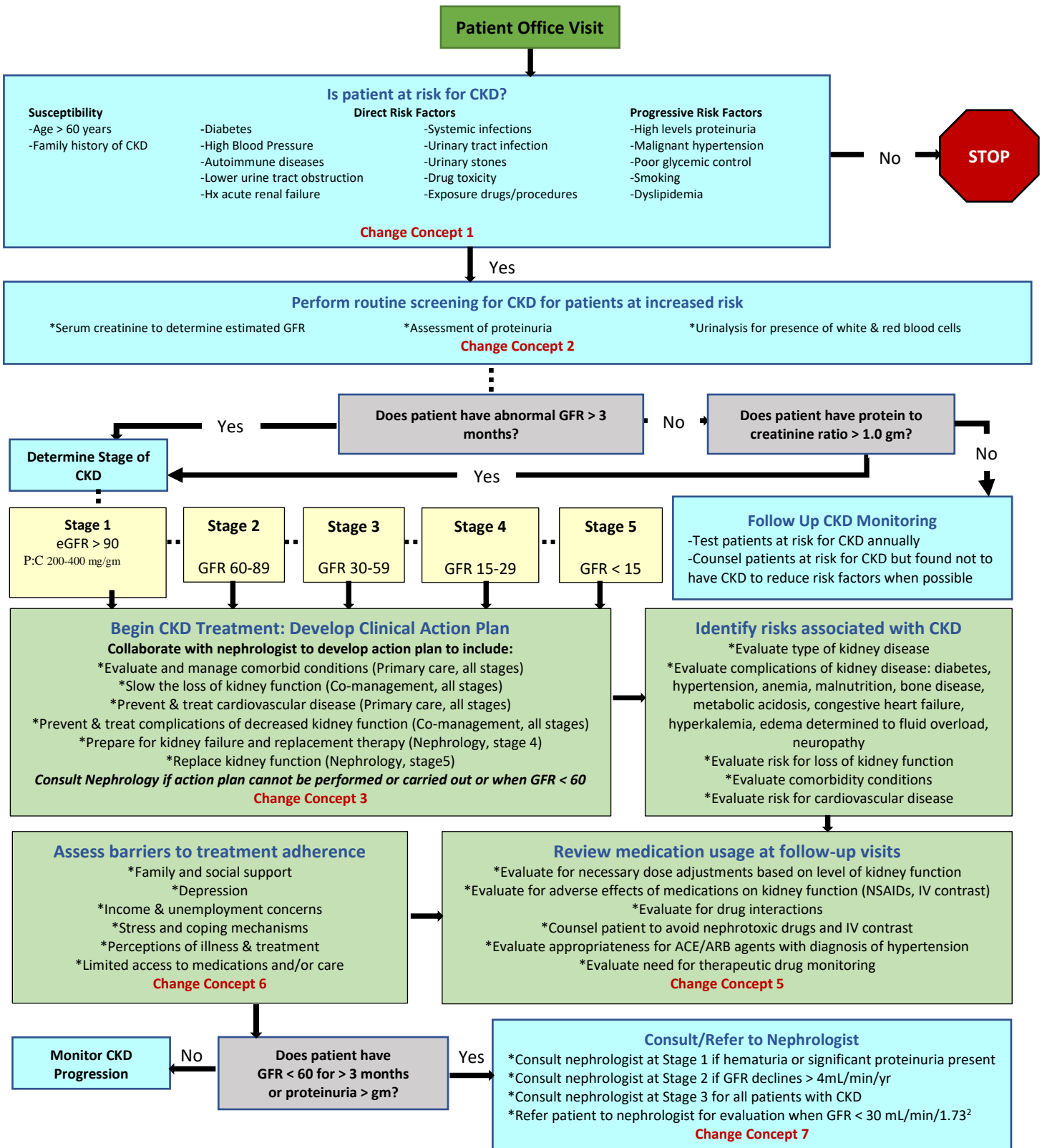


### Chronic Kidney Disease Care Path Assessment



Please note: The Via Christi Health Alliance in Accountable Care, Inc. (the "ACO") in consultation with its affiliated ACO providers developed these care pathways and guidelines based on the most recent evidenced based medicine data. The ACO is continually researching and updating its care pathways and guidelines to reflect the most recent evidence-based standards. This information is intended to provide health professionals with information to improve the quality of care and ultimately lower the cost of such care to the patients they serve. By providing this evidence-based information, it is not the intention of the ACO to provide specific medical advice for particular patients. Rather we urge each provider to review this material when consulting and evaluating the treatment options suitable for their patients. The ACO affiliated providers are solely responsible for confirming the accuracy, timeliness, completeness, appropriateness and helpfulness of this material and making all medical, diagnostic or prescription decisions.

Last Updated: 01/26/2021

## Ascension Via Christi

### Treatment

