



Three Rivers Hospital

We are building a healthier
Humphreys County


healthier
tennessee
COMMUNITIES

Photo credit: TRH

2020

Three Rivers Hospital

Community Health Needs Assessment

- Humphreys County, Tennessee -

*Paper copies of this document may be obtained at: Three Rivers Hospital
451 Highway 13S, Waverly, TN 37185 or by phone 931.296.4203 or via the hospital website
<https://www.threerivershospital.com>*

TABLE OF CONTENTS

Perspective / Overview	03
Project Goals	05
Data Collection and Timeline	06
Information Gaps	07
Participation by Those Representing the Broad Interests of the Community	08
Input of Medically Underserved, Low-Income, and Minority Populations	08
Input of Those with Expertise in Public Health	08
Community Selected for Assessment	09
Key Findings	10
Process and Methods	10
Description of Community Served	11
Business Profile	15
Tapestry Profile	16
Community Input: Individual Interviews	17
Health Status Data, Rankings and Comparisons	23
Results of the CHNA: Community Health Summit Prioritized Needs	38
Prioritization Criteria	38
Prioritized Needs	38
Impact of 2017 CHNA and Implementation Plan	39
Appendix: Community Asset Inventory	46

Perspective / Overview

About Three Rivers Hospital

A personal commitment to caring for our community so you can live your best life.

Three Rivers Hospital (TRH) is a Critical Access Hospital and is dually licensed for twenty-five acute care or swing beds. Our 24-Hour Emergency Room is staffed with qualified Emergency Room physicians and consists of 2,400 square feet, including two trauma/treatment rooms and three examination rooms. Three Rivers Hospital also provides Swing Beds for those who require extended days of care and rehabilitation after an acute inpatient stay either at our hospital or another hospital. Additionally, Three Rivers Hospital operates a Rural Health Clinic to help meet the needs of the community. Just knowing that your loved one is being cared for just a few minutes from your home is comforting and convenient.

We want to remain your preferred health care system by providing high quality, cost effective, accessible and compassionate care that is responsive to the communities we serve.



Photo Credit: Three Rivers Hospital Facebook

Creating a culture of health in the community



Action Cycle Source: the Robert Wood Johnson Foundation's County Health Rankings website: <http://www.Countyhealthrankings.org/roadmaps/action-center>

The Community Health Needs Assessment (CHNA) uses systematic, comprehensive data collection and analysis to define priorities for health improvement, creates a collaborative community environment to engage stakeholders, and an open and transparent process to listen and truly understand the health needs of Humphreys County, Tennessee.

The Action Cycle shows how to create healthy communities. The rankings later in the document assist in understanding what makes a healthy community.

2020 Community Health Needs Assessment

This document is a hospital facility-specific Community Health Needs Assessment (CHNA) for Three Rivers Hospital (TRH).

Three Rivers Hospital as the sponsors of the assessment, engaged national leaders in community health needs assessments to assist in the project. Stratasan, a healthcare analytics and facilitation company based out of Nashville, Tennessee. Stratasan provided the analysis of community health data, conducted the interviews, and prepared this report for the community via the hospital website.



Starting on December 15, 2020, this report is made widely available to the community via Three Rivers Hospital's website <https://www.threerivershospital.com> and paper copies are available free of charge at Three Rivers Hospital, 451 Highway 13S., Waverly, TN 37185 or by phone (931) 296-4203.



Three Rivers Hospital's board of directors approved this assessment on December 10, 2020.

PROJECT GOALS



To continue a formal and comprehensive community health assessment process which allows for the identification and prioritization of significant health needs of the community to assist with resource allocation, informed decision-making and collective action that will improve health.



To continue a collaborative partnership between all stakeholders in the community by seeking input from persons who represent the broad interests of the community.



To support the existing infrastructure and utilize resources available in the community to instigate health improvement in the community.

“ We initiated the Community Health Needs Assessment with the goal to assess the health and needs of the community. This process is an affirmation of what we’ve been doing to improve health and has jumpstarted our next implementation plan,” said Freda Russell, CEO Three Rivers Hospital

The information gathered both from public health data and from community stakeholders provided the insight the community needed to set priorities for significant health issues and will be used by the community to inform and support our implementation plans,” added Dr. George Mathai, Chief of Staff, Three Rivers Hospital

”

Community

Input and Collaboration

Data Collection and Timeline

In October 2020, Three Rivers Hospital began a Community Health Needs Assessment for Humphreys County and sought input from persons who represent the broad interests of the community using several methods:

- Information gathering, using secondary public health sources, occurred in October and November 2020.
- Twenty community members participated in individual interviews for their perspectives on community health needs and issues November 9-13, 2020.

While this CHNA was conducted during the Coronavirus pandemic, community input was achieved via telephone interviews. The community members were asked to think more broadly about health and not only consider Covid, which is the current, dominant public health issue. Their answers reflect they considered all health issues.



Photo Credit: Loretta Lynn Ranch.net

Information Gaps

While this assessment was quite comprehensive, it cannot measure all possible aspects of health in the community, nor can it adequately represent all possible populations of interest. It must be recognized that these information gaps might in some ways limit the ability to assess all the community's health needs.

Participants

Individuals from community and healthcare organizations collaborated to implement a comprehensive CHNA process focused on identifying and defining significant health needs, issues, and concerns of Humphreys County. The three-month process centered on gathering and analyzing data as well as receiving input from persons who represented the broad interests of the community to provide direction for the community and hospital to create a plan to improve the health of the communities.

Participation by those Representing the Broad Interests of the Community

Participation in interviews creating the Humphreys County Community Health Needs Assessment and Improvement Plan included:

Organization
Emergency Management
Waverly City Police Chief
Drug Alliance, County Health Council
Waverly City Mayor
Waverly Fire Chief, 911 Manager
New Johnsonville Mayor
Nurse Practitioner Health Dept
County Mayor
Economic Development
Humphreys County Tourism
Nursing Home Administrator
New Johnsonville Police Chief & Pastor
State of TN Health Dept
Chamber of Commerce
Coordinated School Health
Johnsonville State Historic Park Manager
United Way
Pastor
Air Evac and Lifeguard Ambulance

Community Engagement and Transparency

We are pleased to share the results of the Community Health Needs Assessment with the rest of the community in hopes of attracting more advocates and volunteers to improve the health of our communities. The following pages highlight key findings of the assessment. We hope you will take the time to review the health needs of our community as the findings impact each and every citizen in one way or another; and join in the improvement efforts.

Input of the Medically Underserved, Low-Income, and Minority Populations

Input of medically underserved, low-income and minority populations was received through interviews. Agencies representing these population groups were intentionally invited to the interviews.

Input of those with Expertise in Public Health

Both the State of Tennessee Health Department and the Humphreys County Health Department participated in the interviews and assisted in prioritizing the most significant health needs.

Community Selected for Assessment

Humphreys County was the primary focus of the CHNA due to the service area of Three Rivers Hospital. Used as the study area, Humphreys County provided 90.2% of 2019 inpatient discharges. The community includes medically underserved, low-income and minority populations who live in the geographic areas from which Three Rivers Hospital draws its patients. All patients were used to determine the service area without regard to insurance coverage or eligibility for financial assistance under Three Rivers Hospital's Financial Assistance Policy.

Three Rivers Hospital Study Area - 2020

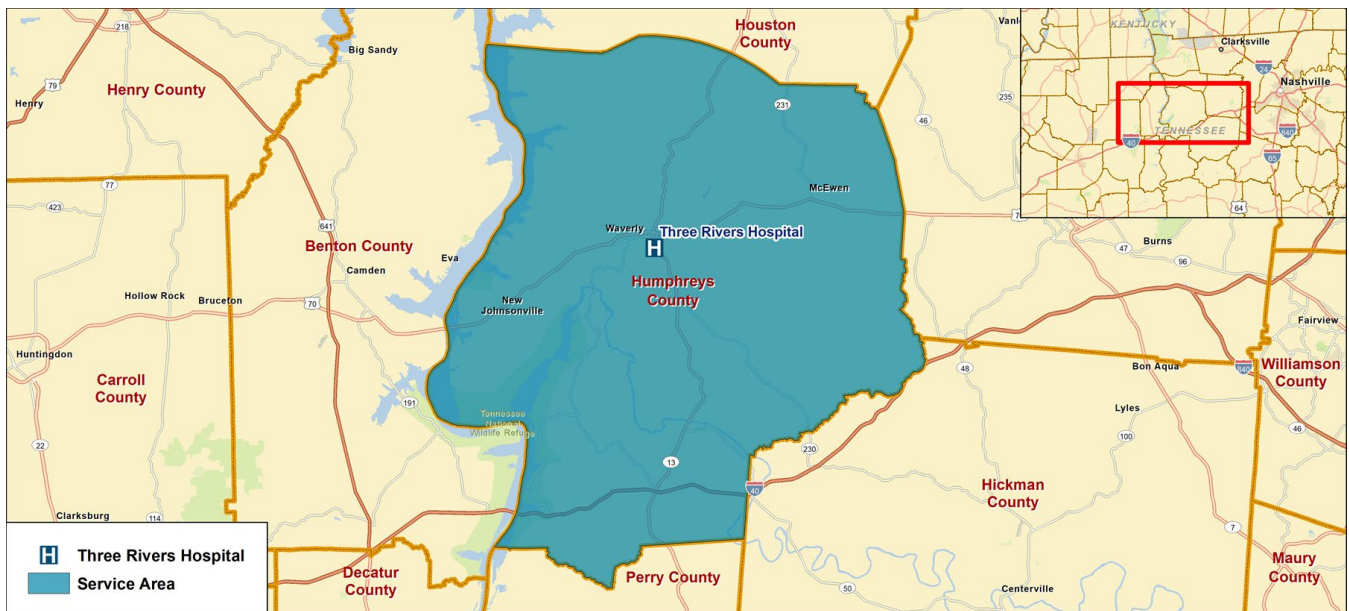


Photo Credit: VisitHumphreys.com; Eagle Bay Marina and Campground

Key Findings

Community Health Assessment

Results

Based on the secondary data, interviews and prioritization, the TRH board approved the following identified needs to be the focus of the work of the medical center over the next three years.

1. Substance Use Disorder
2. Healthy Eating/Active Living
3. Access to Care
4. Chronic Disease

Process and Methods

Both primary and secondary data sources were used in the CHNA.

Primary methods included:

- 20 individual interviews with community members

Secondary methods included:

- Public health data – death statistics, County Health Rankings, cancer incidence
- Demographics and socioeconomic – population, poverty, uninsured, unemployment
- Psychographics – behavior measured by spending and media preferences



Photo Credit: Three Rivers Hospital Facebook

Description of the Communities Served

Demographics

The table below shows the demographic summary of Humphreys County compared to Tennessee and the U.S.

	Humphreys County	Tennessee	USA
Population	18,714	6,969,857	333,793,107
Median Age	44.3	39.7	38.5
Median Household Income	\$44,762	\$53,346	\$62,203
Annual Pop. Growth (2020-2025)	-0.02%	0.92%	0.72%
Household Population	7,519	2,734,534	126,083,849
Dominant Tapestry	Southern Satellites (10A)	Rooted Rural (10B)	Green Acres (6A)
Businesses	614	215,849	11,994,763
Employees	4,990	3,069,542	146,120,824
Health Care Index*	77	89	100
Average Health Expenditures	\$4,424	\$5,097	\$5,748
Total Health Expenditures	\$33.3 M	\$13.9 B	\$724.7 B
Racial and Ethnic Make-up			
White	94%	79%	69%
Black	3%	11%	13%
American Indian	1%	0%	1%
Asian/Pacific Islander	0%	4%	6%
Other	1%	3%	7%
Mixed Race	2%	3%	4%
Hispanic Origin	3%	8%	19%

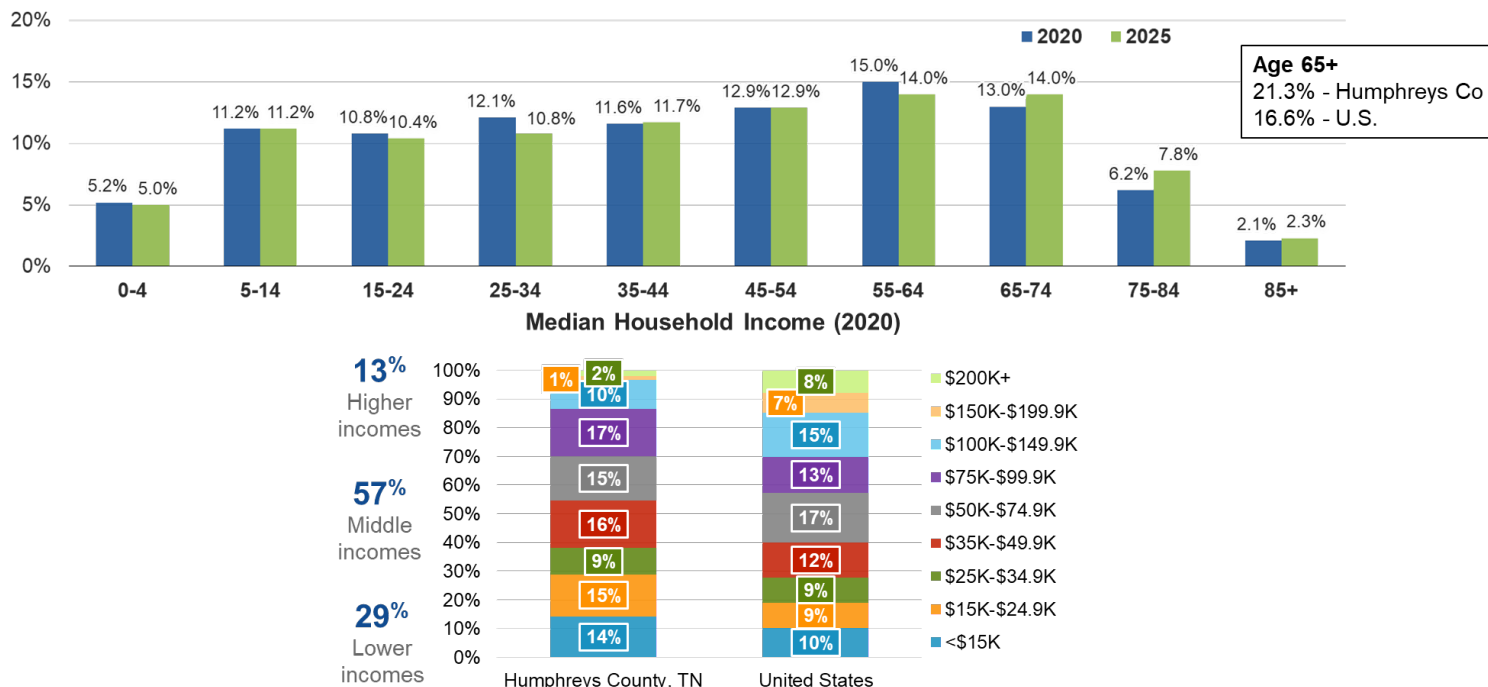
Source: ESRI

*The Health Care Index is household-based, and represents the amount spent out of pocket for medical services and insurance relative to a national index of 100.

The median is the value at the midpoint of a frequency. There is an equal probability of falling above or below the median.

Demographics, cont.

Humphreys County

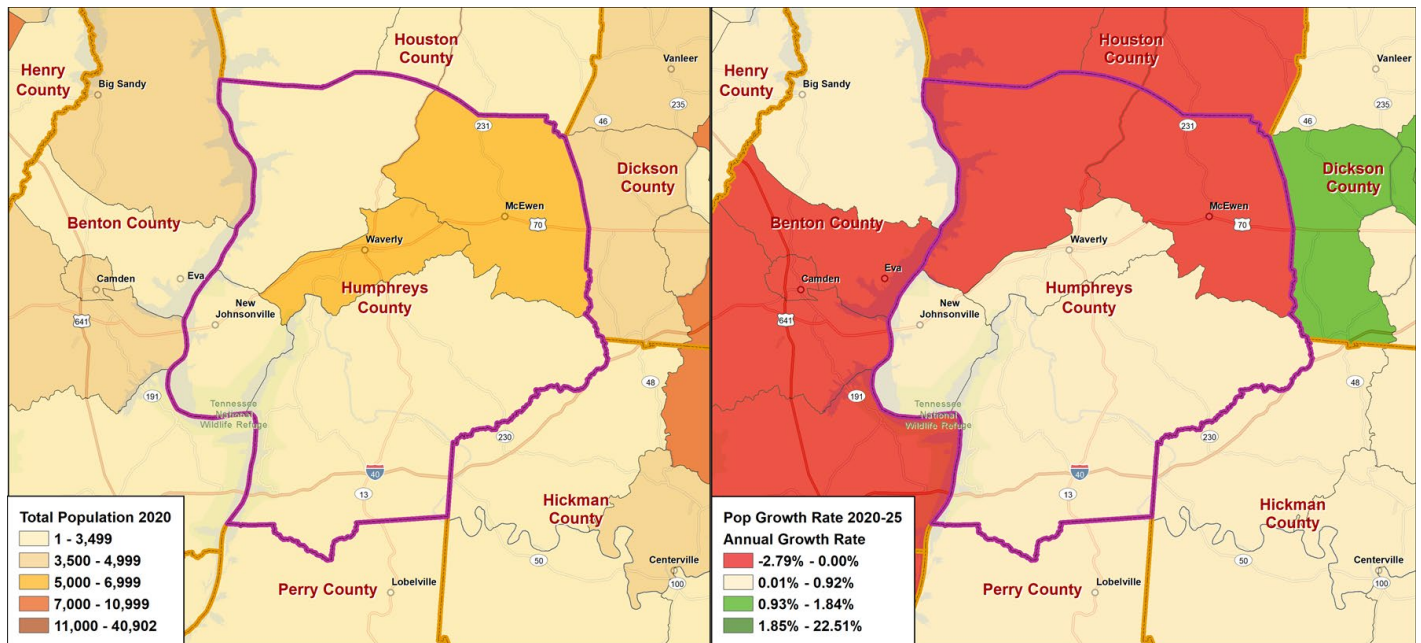


Source: ESRI

- The population of Humphreys County is projected to decrease from 2020 to 2024 (-0.02% per year). Tennessee is projected to increase 0.92% per year. The U.S. is projected to increase 0.72% per year.
- Humphreys County had a higher median age (44.3 median age) than TN (39.7) and the U.S. (38.5). In Humphreys County the percentage of the population 65 and over was 21.3%, higher than the U.S. population 65 and over at 16.6%.
- Humphreys County median household income at \$44,762 was lower than TN (\$53,346) and the U.S. (\$62,203). The rate of poverty in Humphreys County was 13.6% which was lower than TN (15.2%), but higher than the U.S. (13.1%).
- The household income distribution of Humphreys County was 13% higher income (over \$100,000), 57% middle income, and 29% lower income (under \$25,000).
- The health care index measures how much the populations spent out-of-pocket on health care services including insurance premiums. The U.S. index was 100. Humphreys County was 77, indicating 23% less spent out of pocket than the average U.S. household on medical care (doctor's office visits, prescriptions, hospital visits) and insurance premiums.
- The racial and ethnic make-up of Humphreys County was 94% White, 1% American Indian, 3% Hispanic Origin, 2% mixed race, 3% Black, and 1% other. *(These percentages total to over 100% because Hispanic is an ethnicity, not a race.)*

Demographics, cont.

2020 Population by Census Tract and Change (2020-2025)



Source: ESRI

Red is population decline

Yellow is positive up to the TN growth rate

Green is greater than the TN growth rate

Dark Green is twice the TN growth rate

Census tracts generally have a population size between 1,200 and 8,000 people, with an optimum size of 4,000 people.

The census tracts of Waverly and McEwen have the highest population.

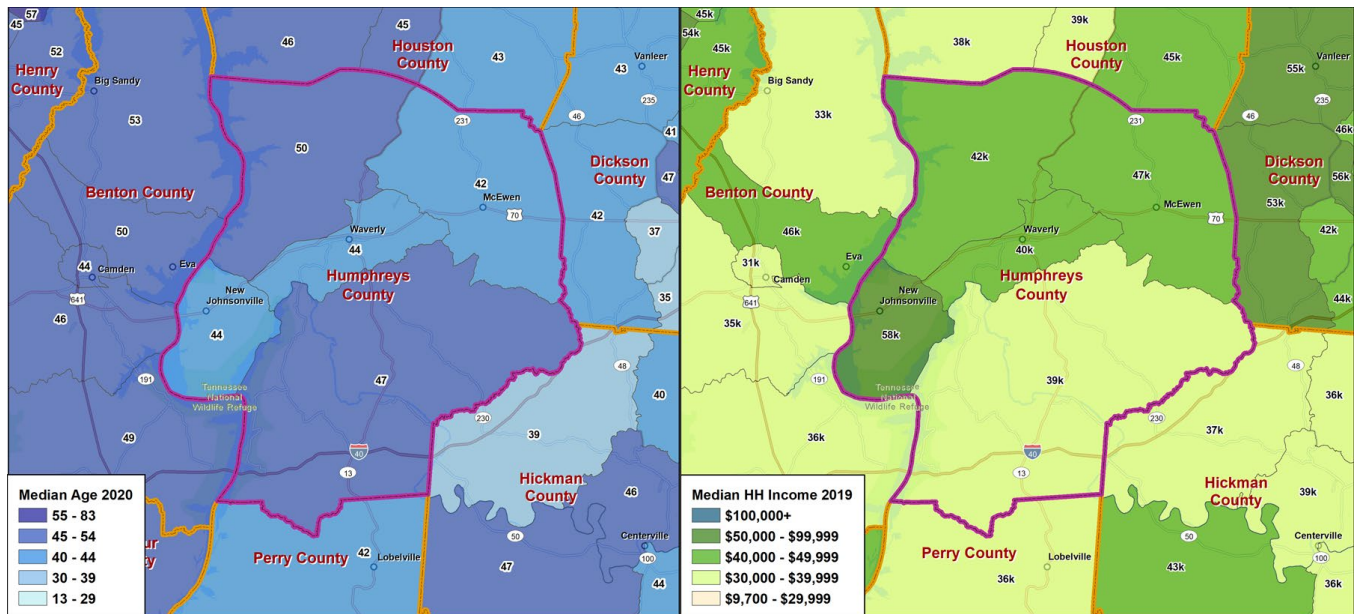
Humphreys County's population was projected to decrease from 2020 to 2025, -0.02% per year.

However, the southern census tracts are expected to increase up to the TN growth rate and only the two northern tracts are projected to lose population, McEwen and north of New Johnsonville and Denver.

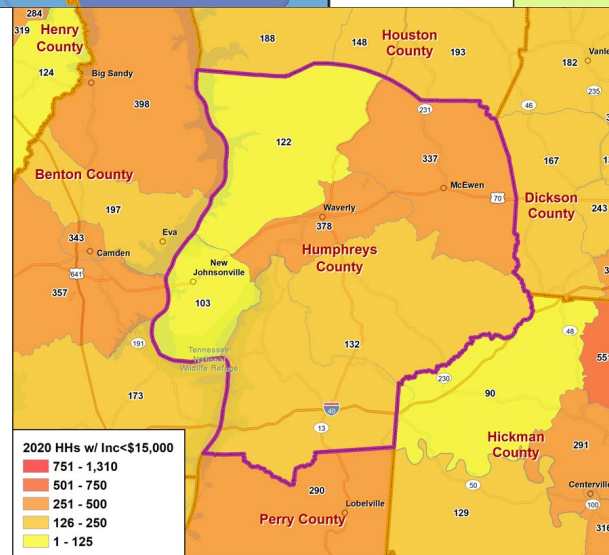


Photo Credit: visithumphreys.com

2020 Median Age & Income



Source: ESRI



The top two maps depict median age and median income by census tract. Looking at age and income by census tract is helpful to demonstrate all areas of a county are not the same. The health needs may be very different in the census tract northwest of Waverly with a median age of 50 than the census tracts further east including McEwen with a median age of 42.

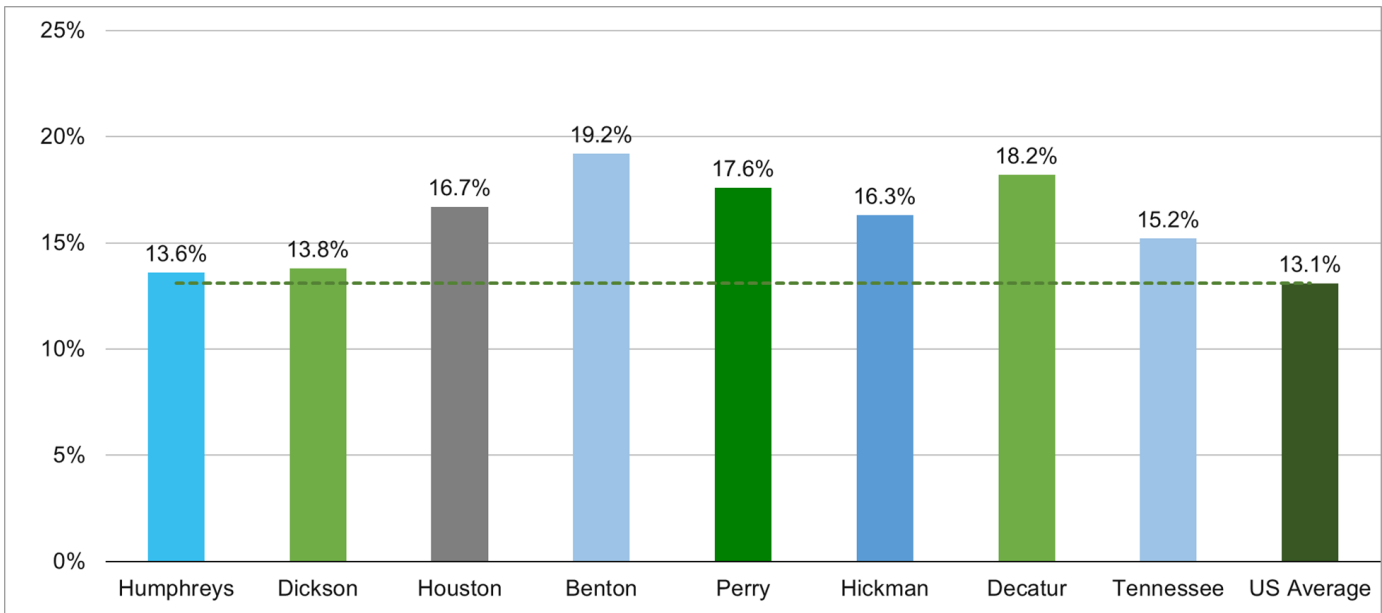
Looking at median household income by census tract also gives insight into health status. The lower income areas may worse health status than the higher income tracts. The lower income census tract is in the south region of Humphreys County with \$39K median household income.

The lower map is the number of households making less than \$15,000 per year. Again further attempting to identify those areas within the county that may have lower health status. Waverly has the highest number of households with incomes lower than \$15,000 with 378, followed by McEwen then the south census tract.

Demographics, cont.

Humphreys County's 2019 poverty percentage was 13.6% compared to Tennessee at 15.2% and the U.S. at 13.1%.

2019 Percent of Population in Poverty



Source: U.S. Census Bureau, Small Area Income and Poverty Estimates (SAIPE) Program (2019 data, released 2020)

Business Profile

53.2% percent of employees in Humphreys County were employed in:

- Retail Trade (13.6%)
- Health Care & Social Assistance (13.3%)
- Educational Services (9.4%)
- Accommodation & Food Service (9.2%)
- Public Administration (7.7%)

Source: Esri

Retail and accommodation & food service offers health insurance at a lower rate than healthcare, public administration and educational services.

Humphreys County's September 2020 preliminary unemployment was 4.6% compared to 6.3% for Tennessee and 7.9% for the U.S.

It is beneficial to work with and engage the community in groups to improve health. There are three primary places people gather during the week, work, church and school. These are three excellent places to reach people to create a culture of health.

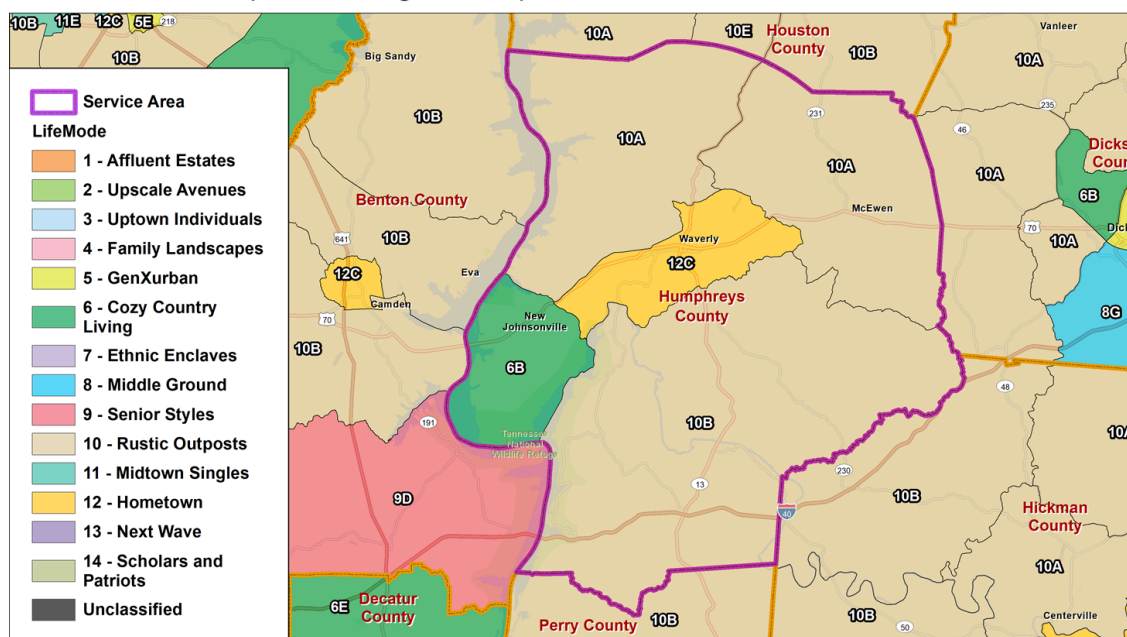
Tapestry Segmentation

Demographics are population, age, sex, race. Psychographics are adding behavior data in the form of spending habits and survey data on top of demographics. 84% of Humphreys County households are included in four Tapestry Segments. The map below is color coded by LifeMode, which are groupings of Tapestry Segments that behave similarly. The dominant Tapestry segment of each census tract is identified by number.

The dominant Tapestry Segments in the county were Southern Satellites (27%), Rooted Rural (20%), Salt of the Earth (20%) and Small Town Simplicity (17%).

There is a very brief description of the segments on the right of the map. There is much more information on Tapestry Segments, at <http://doc.arcgis.com/en/esri-demographics/data/tapestry-segmentation.htm>. Studying the Tapestry Segments in the study area helps determine health habits and communication preferences of residents enabling more effective communication and implementation of solutions to improve health. To improve health, it's helpful to meet people where they are. Studying their Tapestry Segment can help do that.

Top four categories represent 84% of total households.



Top 4 Tapestry Segments

10A | Southern Satellites (27%)

- 40.3 med. age
- \$48k med. HH income
- Outdoor sports and activities
- More concerned about cost rather than quality or brand loyalty
- Tend to be somewhat late in adapting to technology
- Obtain their information from TV

10B | Rooted Rural (20%)

- 45.2 med age
- \$42k med. HH income
- Hunting and fishing
- Shop for generic and American made products
- Listen to country and gospel radio

6B | Salt of the Earth (20%)

- 44.1 med. age
- \$56k med. HH income
- Truck ownership is high
- DIY home improvement
- Watch satellite TV, use highspeed internet

12C | Small Town Simplicity (17%)

- 40.8 med. age
- \$32k med. HH income
- Young families and senior HH
- Price conscious consumers that shop w/ coupons at discount stores
- Connected, but not to the latest or greatest gadgets: keep their headline

Dominant Tapestry Segmentation of Humphreys County

Arrows point to the top 4 tapestry segments within the service area. Tapestry segments only appear on map if they are ranked 1st in a census tract.

Source: ESRI

Interview Results

Interviews

Community stakeholders representing the broad interests of the community as well as representing low income, medically underserved and minority populations participated in individual interviews November 9-13, 2020 to share their input into the community's health. Below is a summary of the individual interviews.

1. How do you define health?

Two schools of thought:

1. Absence of disease – not having to use sick leave, physical condition, access to quality care and regular prevention, medications and vaccines
2. Wellbeing – physical, mental, emotional, spiritual, thriving, able to meet the day with a smile and do what you want to.

2. For the purposes of this Community Health Needs Assessment, the community is Humphreys County, generally, how would you describe the community's health?

Varied from very healthy to poor and not very good.

- Overall pretty good, healthy place
- Good – health advancements
- Pretty good overall
- Average – so many elements to health
- Nothing that is just specific to the county – society in general is more apathetic and less active than they need to be.
- Pretty poor health
- Health is in the eyes of the beholder
- Getting better – more active people trying to be healthy
- Two groups – those more affluent and educated seem pretty good and the other extreme lower income not fairing very well.

3. What are the most significant health issues for the Humphreys County?

- **Healthy eating/active living – Obesity** - poor diet and lack of physical activity results in obesity, childhood obesity 40%, results in high blood pressure, diabetes, heart disease.
- **Chronic Diseases** – Heart disease/failure, diabetes, asthma, sinus, kidney function, cancer
- **Substance Use Disorder** – addiction, overdoses, heroin, meth, gotten worse. Includes tobacco, vaping, smoking and alcohol abuse and alcohol impaired driving deaths.
- **Mental Health** – awareness, taboo, lack of providers, Covid making it worse, depression, need counseling in schools and telehealth.
- **Access to Care** – threat of losing the hospital, doctors leaving and retiring, not equal access to care, people don't want to travel to Dickson to get care, transportation issues
- **Covid** – higher rates of infection, not taking it seriously, fearful
- **Poverty/Socioeconomics** – Not enough resources to purchase healthy food, link between poverty and physical health, can't afford suitable housing, homeless population
- **Personal Responsibility/Compliance** – difficult to change behavior, be compliant

Interview Results, cont.

- Others:
 - Support for people and families entering hospice
 - Premature deaths
 - Teenage pregnancy
 - Poor dental care
 - Communication – resources, but people don't know about them
 - Breast cancer services

4. What are the most significant health issues facing various populations including medically underserved, low-income and minority populations?

- Access:
 - to healthcare – fewer providers
 - to transportation – 90 minutes from Nashville, 30 minutes from Dickson, some people are afraid to drive on the interstate, some have no transportation
 - to insurance/financing – ability to pay for medicine, lack of insurance, delays in care
- Healthy Eating/Active Living - Obesity – low income more issues with weight and diabetes, lack of nutritious food, access to healthy food, can't afford a gym, lack of activity.
- Other Issues:
 - 126 homeless
 - Education on self care
 - Isolation affecting mental health
 - Diabetes
 - Respiratory disease
 - Lack of money causes stress
 - Regular health issues

5. What are the most important health issues facing children?

- Healthy Eating/Active Living - Obesity – proper nutrition, healthy food choices, exercise, sedentary lifestyle, screen time, fast food
- Mental health – screen time, depression, stigma, bullying, trauma in their homelives
- Access to care – dental care, no fluoride in the water, lack of pediatricians, long drive to Dickson, poor parenting
- Substance use disorder - Vaping, nicotine, drugs, alcohol, second-hand smoke
- Others
 - Social media makes everything harder
 - Neglect or abuse – with home schooling, kids not seen by other adults and issues may go unaddressed
 - Lack of early learning opportunities
 - Little help for special needs kids, particularly dyslexia
 - Accidents

Interview Results, cont.

6. What are the most important health issues facing seniors?

- **Chronic disease** – with older age comes more issues, cancer, every health issue is significant, COPD, CHF
- **Access to care** – not as mobile, transportation, ability to afford medications, need a regular cardiologist, more services available locally
- **Mental health/Isolation** – dementia, isolation especially now, no family, no transportation
- **Nutrition and Activity** – Not eating healthy, nutritious food and activity, exercise
- Other issues:
 - Falls
 - Lack of awareness of resources
 - Some seniors take better care of themselves than others

7. The community performed a CHNA in 2017 and identified priorities for health improvement

1. Obesity
2. Substance Abuse
3. Access
4. Tobacco Use
5. Chronic Disease
6. Mental Health

Is this list still valid?

Yes, still right on, same, nail on the head, they go hand in hand, still very accurate list.

What has changed most related to health status in the last three years?

- Obesity – one for gotten better, one for worse and two still an issue and related to mental health
- Substance use – most believe it has gotten worse with the pandemic and with kids vaping. Crime, overdoses, breakdown of family unit also mentioned as results.
- Access to care – We Care, We Help cited as improving access, helicopter and health department improve access. Losing physicians and risk to hospital decreases access to care.
- Chronic disease – risen during Covid, easier to talk about.
- Other thoughts – not much has changed, valiant efforts have been made toward correcting these, community partnerships have improved to address the issues.
- Poverty undergirds the list of health issues and exacerbates each of the problems

8. What behaviors have the most negative impact on health?

- **Substance Use** – taking drugs, addiction, abuse, alcoholism, smoking, heroin, vaping
- **Healthy eating** – eating out too much, unhealthy choices, long commutes and eating on the go
- **Activity** – Lack of exercise, sedentary lifestyles
- **Mentality/lifestyle** – embrace a healthy lifestyle and culture, listen to experts
- Others:
 - Domestic violence, child abuse
 - Get people back in church – feels good

Interview Results, cont.

9. What environmental factors have the biggest impact on community health?

- **Plants and chemicals** – heavy industry along the river, polluters, but well regulated
- **Water** – mix of water is good and there are a lot of microplastics and iron in the water
- **Housing** – not enough low-income housing, rentals, apartments
- **Exercise opportunities** – mixed-- limited exercise opportunities, opportunities but people don't use them, and lots of opportunities, walking track, safe neighborhoods, great parks and trails
- Others:
 - River cleanups reveal pollutants
 - Improved
 - Air quality no different than anywhere else
 - Chemicals used in the farming and food industry

10. What do you think the barriers will be to improve health in the communities?

- Keeping the hospital and local physicians – the hospital is the hub of health, perception hospital can't treat them, attracting doctors to the area
- Financial – poverty, money for projects, finances for care
- Healthy culture and mindset/motivation – make health a priority, need participation in programs, childcare, desire to change, motivation, accept medical advice, time and knowledge to prepare food
- Lack of services – mental health, preventative services
- Others:
 - Communication
 - Don't paint the community with a broad brush, people are different
 - Safe place for kids to play outside and get exercise



Photo Credit: Landflip.com; Hurricane Creek

Interview Results, cont.

11. What community assets support health and wellbeing?

- Local Health Providers
 - Hospital – new programs, sleep studies, cardiac rehab, health clinic
 - Health Department – well-stocked pharmacy, education and treatment
 - Good, local doctors
 - New hospice
 - Dialysis clinic
 - Nursing homes
- Opportunities to Exercise
 - Great state park – hiking trails, tourism, programs
 - Good sidewalks
 - Walking paths
 - Gym in town
 - Fitness and education programs in the schools
 - Exercise classes at the Senior Centers
 - Canoeing, kayaking, hiking, natural resources
 - Blessed with an abundance of outdoors
- Community Organizations/Programs
 - We Care, We Help – Health Department and United Way
 - Little Black Dress Event focusing on women's issues
 - Health Council
 - Meals on Wheels
 - Good education system
 - Senior Centers
 - Health fairs
 - Elected officials concerned about the community
 - Churches
 - Drug Alliance
 - Police are good and really care
 - Community togetherness
 - State Health Department
 - ACES program for children
 - UT Extension

Interview Results, cont.

12. Where do members of the community turn for basic healthcare needs?

- Hospital and Hospital ER
- Local physicians
- Local nurse practitioners
- Walk-in clinics
- CVS
- Fast Pace Urgent Care
- Health Department
- Dickson
- Nashville

13. What are the top three most significant health issues/needs for the county to improve health?

- Substance Use Disorder (13 mentions) includes tobacco
- Healthy Eating/Active Living – Obesity (11 mentions)
- Access to Care (11 mentions)
- Mental Health (10 mentions)
- Chronic Disease (7 mentions)
- Other mentions (1 mention each) -
 - Higher paying jobs
 - More education and continued education
 - Childhood abuse and development
 - Motivation to change

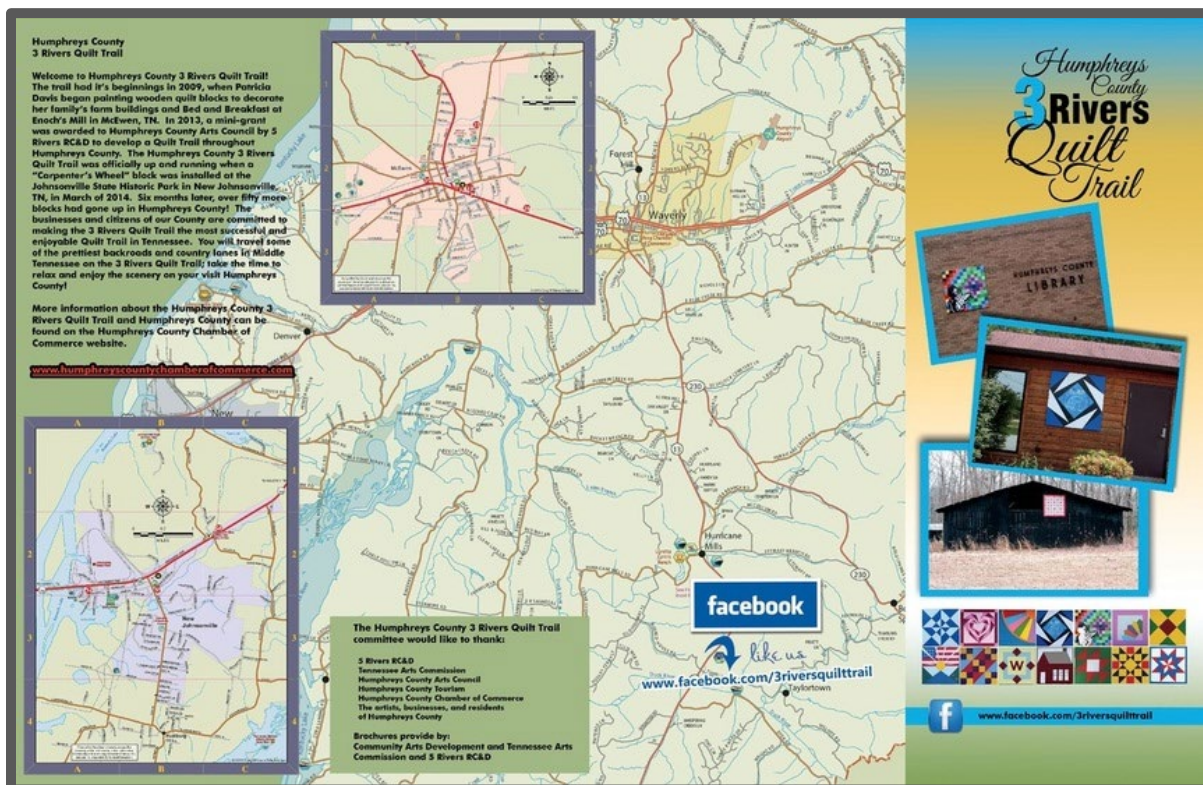


Photo Credit: Humphreys County Chamber of Commerce

Health Status Data

Based on the 2020 County Health Rankings study performed by the Robert Wood Johnson Foundation and the University of Wisconsin², Humphreys County ranked 45th out of 95 Tennessee counties for health outcomes (1= the healthiest; 95 = unhealthiest), and 41st for health factors. Health outcomes are composed of length of life and quality of life. Health factors are comprised of health behaviors, clinical care, social & environmental factors, and physical environment.

County Health Rankings suggested the areas to explore for improvement in Humphreys County were: higher adult smoking, higher adult obesity, higher population per primary care physician, higher preventable hospital stays, lower percentage of the adult population with some college, higher unemployment, and higher injury deaths. The areas of strength were identified as higher food environment index, lower percentage of excessive drinking, lower sexually transmitted infections, higher flu vaccinations, and lower percentage of children in single-aren't households.

When analyzing the health status data, local results were compared to Tennessee, the U.S. (where available), and the top 10% of counties in the U.S. (the 90th percentile). Where Humphreys County's results were worse than TN and U.S., groups and individuals have an opportunity to act and improve these community measures. To become the healthiest community in Tennessee and eventually the nation, Humphreys County must close several lifestyle gaps. For additional perspective, Tennessee was ranked the 44th healthiest state out of the 50 states. (Source: 2019 America's Health Rankings; lower is better) Tennessee strengths were high percentage of high school graduation, low prevalence of excessive drinking and high immunizations for children. Tennessee challenges were high prevalence of smoking, high violent crime rate, high prevalence of mental and physical distress.

Comparisons of Health Status

Information from County Health Rankings and America's Health Rankings was analyzed in the CHNA in addition to the previously reviewed sociodemographic information and other public health data. Other data analyzed is referenced in the bullets below, such as: causes of death, demographics, socioeconomic, consumer health spending, and interviews. If a measure was better than Tennessee, it was identified as a strength, and where an indicator was worse than Tennessee, it was indicated an opportunity for improvement. To prevent strengths from becoming opportunities for improvement, it's important to continually focus on them. Opportunities were denoted with red octagons, and strengths were denoted with green stars for easy interpretation. The years displayed on the County Health Rankings graphs show the year the data was released. The actual years of the data are contained in the source notes below the graphs.

² The Rankings are based on a model of population health that emphasizes the many factors that, if improved, can help make communities healthier places to live, learn, work and play. Building on the work of America's Health Rankings, the University of Wisconsin Population Health Institute has used this model to rank the health of Tennessee's counties every year since 2003.

In most of the following graphs, Humphreys County will be blue, Tennessee (TN) will be red, U.S. gray and the 90th percentile (top 10 percent) of counties in the U.S. gold.

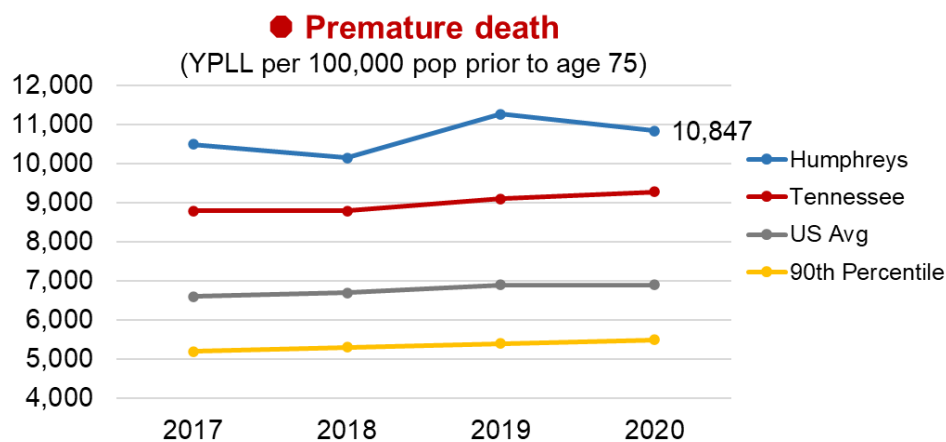
Health Outcomes (Length of Life and Quality of Life)

Health Outcomes are a combination of length of life and quality of life measures. Humphreys County ranked 45th in health outcomes out of 95 Tennessee counties.

Length of Life

Length of life was measured by years of potential life lost per 100,000 population prior to age 75, lower is better. For example, if a 25-year-old is killed in an accident, that is 50 years of potential life lost prior to age 75. Humphreys County ranked 64th in length of life in TN. Humphreys County lost 10,847 years of potential life per 100,000 population which is higher than TN and the U.S.

Humphreys County residents can expect to live 5.3 years less than the average U.S. resident.



Source: County Health Rankings; National Center for Health Statistics – Mortality File 2016-2018

● Life Expectancy

(Average number of years a person can expect to live)

	2020
Humphreys County	73.8
Tennessee	76.0
US Avg	79.1
90th Percentile	81.1

Source: County Health Rankings; National Center for Health Statistics – Mortality File 2016-2018

Leading Causes of Death: Age-Adjusted Death Rates per 100,000 Population

Cause of Death	Humphreys County	Tennessee	US
Heart Disease	275.0	202.4	163.6
Cancer	194.1	168.0	149.1
Accidents (Unintentional Injuries)	89.4	63.5	48.0
Respiratory Diseases	63.4	55.9	39.7
Strokes	33.6	43.6	37.1
Alzheimer's	34.3	45.0	30.5
Diabetes	27.2	24.5	21.4
Influenza and Pneumonia	39.0	20.7	14.9
Kidney disease	N/A	14.3	12.9
Suicide	17.5	16.6	14.2
Liver disease	19.0	13.5	11.1
Sepsis	N/A	11.5	10.2

Source: Wonder.cdc.gov. Age-adjusted rates per 100,000 population. Humphreys County data from 2014-2018 combined. TN, US data from 2018. *Rates that appear in red for a county denote a higher value compared to state data. Age Adjustment Uses 2000 Standard Population.

As of Nov 18, 2020, 7 deaths related to Covid-19 were recorded, 37 per 100,000 population, making it the sixth leading cause of death.

Red areas had death rates higher than TN. The leading causes of death in Humphreys County were heart disease, cancer, accidents, respiratory diseases, influenza and pneumonia, Alzheimer's disease, stroke, diabetes, liver disease and suicide. Humphreys County's death rate was higher than TN in all but two causes of death (stroke and Alzheimer's).

Length of Life STRENGTHS

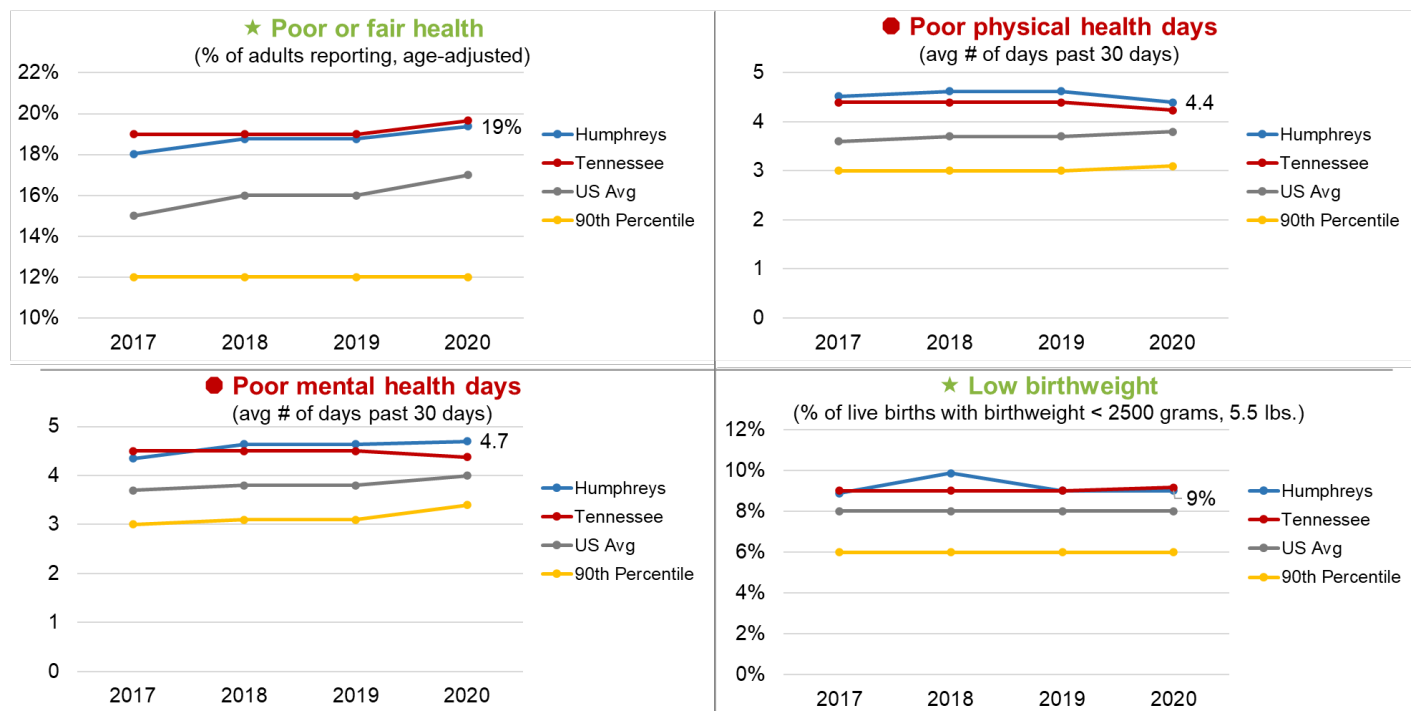
- Humphreys County had a lower death rate for stroke and Alzheimer's disease than TN.

Length of Life OPPORTUNITIES

- Humphreys County had a higher death rate for heart disease, cancer, accidents, respiratory disease, influenza and pneumonia, diabetes, liver disease and suicide than TN.
- Humphreys County had lower life expectancy than TN and the U.S. and higher years of potential years of life lost. A resident of Humphreys County can expect to live 5.3 years less than the average US resident.

Quality of Life

Quality of life was measured by: % reporting fair or poor health, the average number of poor physical health days and poor mental health days in the past 30 days, and % of live births with birthweight less than 2500 grams, or 5.5 lbs. Humphreys County ranked 34th in quality of life out of 95 Tennessee counties.



Source: County Health Rankings; Behavioral Risk Factor Surveillance System (BRFSS) 2017
Source: County Health Rankings: National Center for Health Statistics – Natality files (2012-2018)

Quality of Life STRENGTHS

- Humphreys County had a slightly lower percentage of adults reporting poor or fair health than TN at 19%, but higher than the US at 17%.
- Humphreys County had the same percentage of low birthweight babies at 9% as TN, but higher than the US at 8%.

Length of Life OPPORTUNITIES

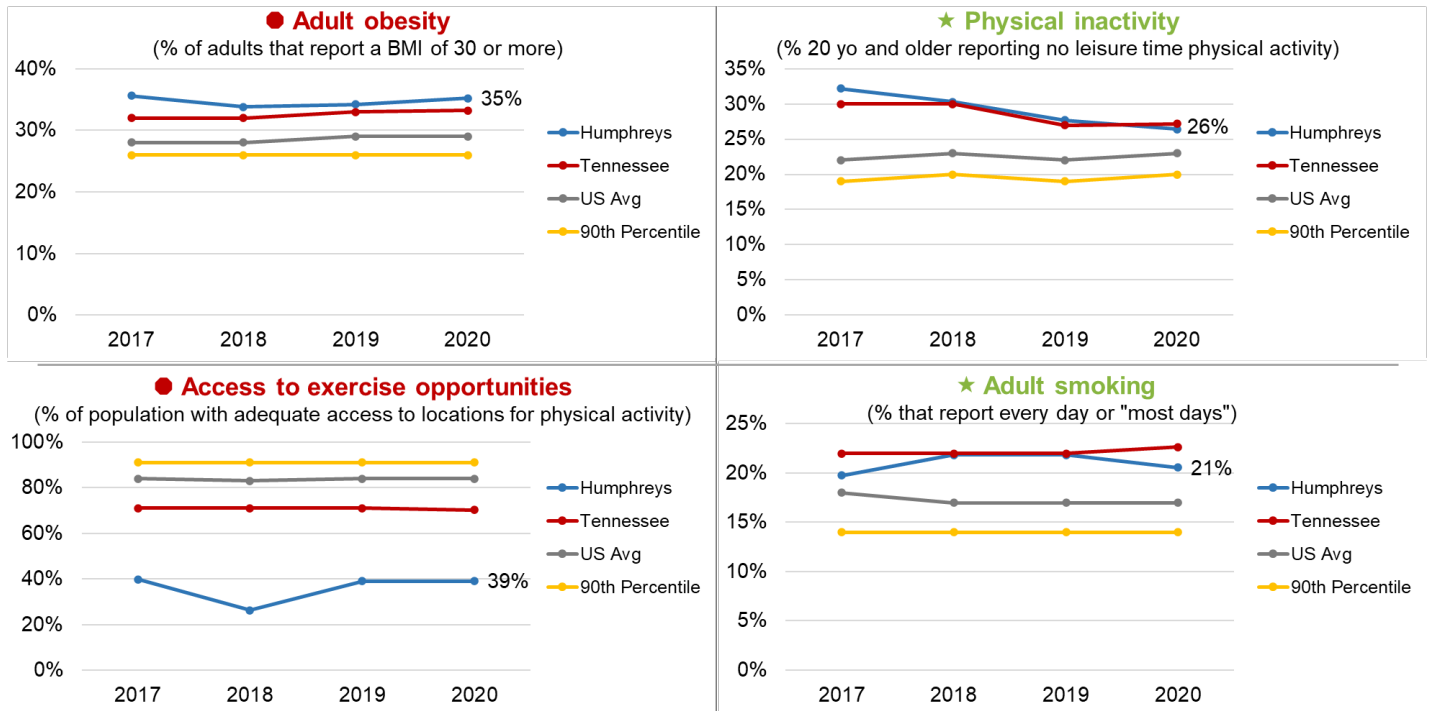
- Humphreys County had a higher percentage of adults reporting poor physical health days than TN at 4.4 of the past 30 days.
- Humphreys County had a higher percentage of adults reporting poor mental health days than TN at 4.7 out of the past 30 days and higher than the U.S. at 4.0.

Health Factors or Determinants

Health factors or determinants rankings are comprised of measures related to health behaviors (30%), clinical care (20%), social & economic factors (40%), and physical environment (10%). Humphreys County ranked 41st in health factors out of 95 Tennessee counties.

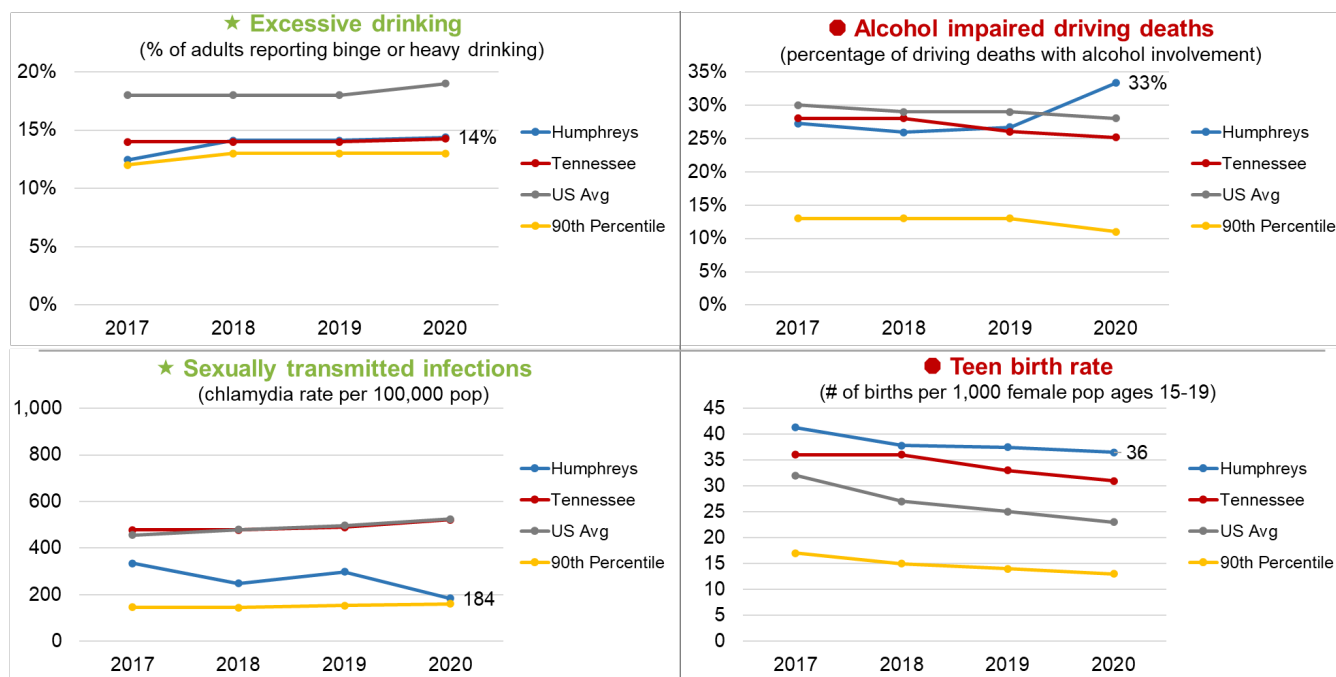
Health Behaviors

Health behaviors are made up of nine measures and account for 30% of the county rankings. Humphreys County ranked 25th in health behaviors out of 95 counties in Tennessee.

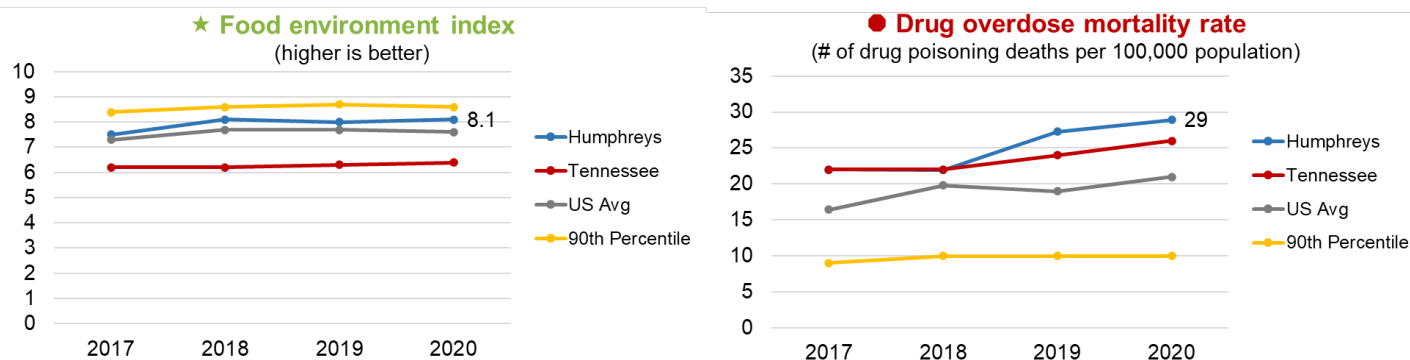


Source: Obesity, physical inactivity - County Health Rankings; CDC Diabetes Interactive Atlas based on responses to BRFSS and Census Bureau's population estimates program, 2016 Source: Access to exercise opportunities - County Health Rankings; ArcGIS Business Analyst, Delorme map data, Esri and U.S. Census Tigerline Files, 2010 and 2019. Measures the percentage of individuals in a County who live reasonably close to a location for physical activity, defined as parks or recreational facilities (local, state national parks, gyms, community centers, YMCAs, dance studios and pools based on SIC codes) Source: Smoking - County Health Rankings; Behavioral Risk Factor Surveillance System (BRFSS), 2017

Health Behaviors, Cont.



Source: Excessive drinking - County Health Rankings; Behavioral Risk Factor Surveillance System (BRFSS), 2017 Source: Alcohol-impaired driving deaths - County Health Rankings; Fatality Analysis Reporting System, 2014-2018 Source: STIs - County Health Rankings; National Center for HIV/AIDS, Viral Hepatitis, STD, and TB Prevention, 2017 Source: Teen birth rate - County Health Rankings; National Center for Health Statistics - Natality files, 2012-2018



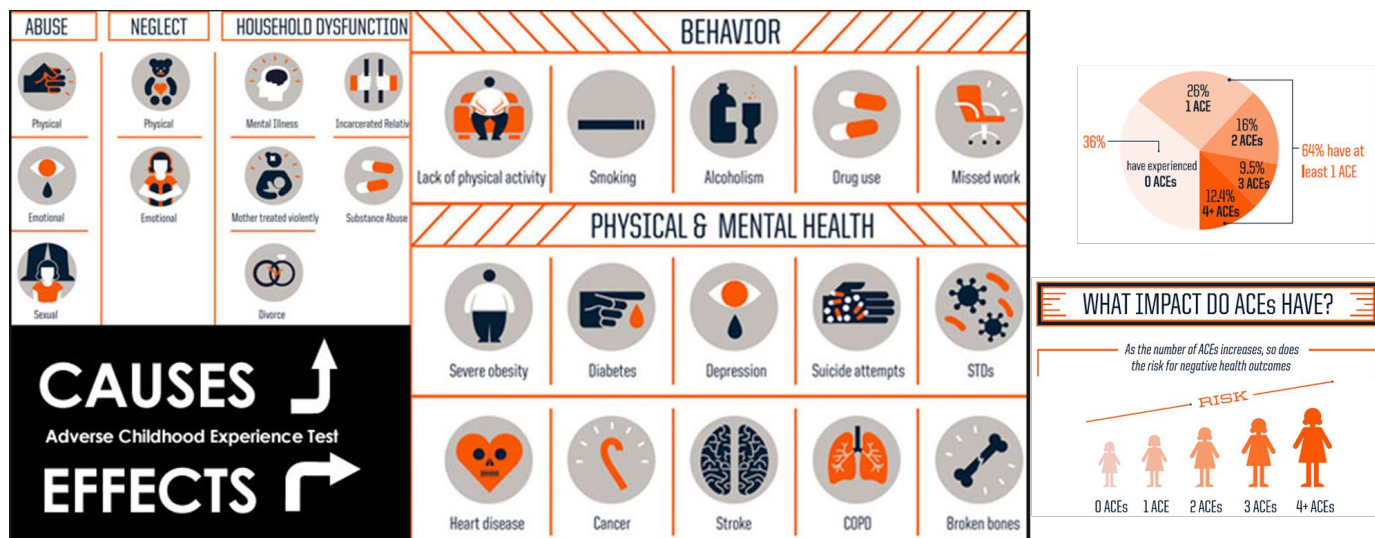
Source: Food environment: County Health Rankings; USDA Food environment Atlas, Map the Meal Gap from Feeding America, 2015 & 2017; Drug overdose rate: CDC WONDER mortality data, 2016-2018

The food environment index is comprised of % of the population with limited access to healthy foods and % of the population with food insecurity. Limited access to foods estimates the % of the population who are low income and do not live close to a grocery store. Food insecurity is the % of the population who did not have access to a reliable source of food during the past year.

Health Behaviors, Cont.

Adverse Childhood Experiences (ACEs)

Abuse, neglect and household dysfunction have the effect of poor health behaviors as well as poor physical and mental health. The more ACEs a child has the higher risk they are for poor health outcomes.



	0 ACEs	1 ACEs	2+ ACEs
United States	54%	25%	22%
Tennessee	52%	24%	25%

Among children from birth through age 17, percentage reported to have had zero, one, and two or more ACEs, nationally and by state.

Data Source: National Survey of Children's Health 2016, Health Resources and Services Administration, Maternal and Child Health Bureau. <https://mchb.hrsa.gov/data/national-surveys>

ACEs data is not available for Humphreys County. However, Tennessee had a lower percentage of youth with no aces and 1 ACE but higher for 2 or more ACEs.

Health Behaviors STRENGTHS

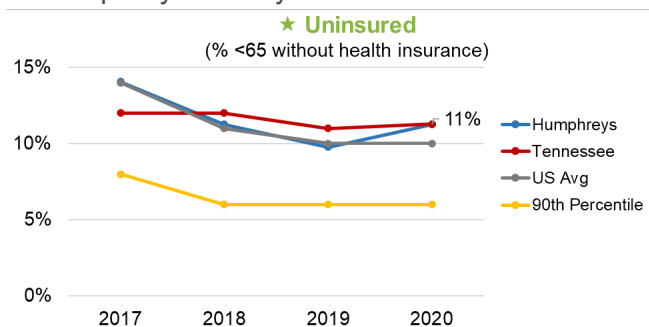
- Physical inactivity was slightly lower in Humphreys County at 26% than TN at 27% but higher than the U.S. at 23%.
 - Humphreys County adult smoking was 21%, lower than TN at 23%, but higher than the U.S. at 17%. County Health Rankings identified smoking as an area to explore because smoking is so damaging to health status.
 - 14% of Humphreys County reported binge or heavy drinking the same as TN and lower than the U.S. (19%).
 - Sexually transmitted infections measured by chlamydia rate per 100,000 population were lower in Humphreys County (184) than TN (649) and the U.S. (525). The rate is approaching the lowest 10% in the country.
 - The food environment index was higher (better) in Humphreys County (8.1) than TN (6.4), but lower than the U.S. (7.6).
-

Health Behaviors OPPORTUNITIES

- Adult obesity in Humphreys County was 35%, higher than TN at 33% and the U.S. at 29%. The obesity trend had been increasing in Humphreys County. Obesity in Tennessee and the U.S. continue to rise, putting people at increased risk of chronic diseases including: diabetes, kidney disease, joint problems, hypertension and heart disease. Obesity can cause complications in surgery and with anesthesia. It has been implicated in Alzheimer's and often leads to metabolic syndrome and type 2 diabetes.
 - Access to exercise opportunities in Humphreys County was 39%, lower than TN at 70% and the U.S. at 84%.
 - Alcohol impaired driving deaths were higher in Humphreys County (33%) than in TN (25%) and the U.S. (28%).
 - The teen birth rate in Humphreys County was 36 births per 1,000 female population ages 15-19, higher than TN at 31 births, and the U.S. at 23 births.
 - The number of drug overdose deaths per 100,000 population was 29 in Humphreys County, higher than TN at 26 and the U.S. at 21.
-

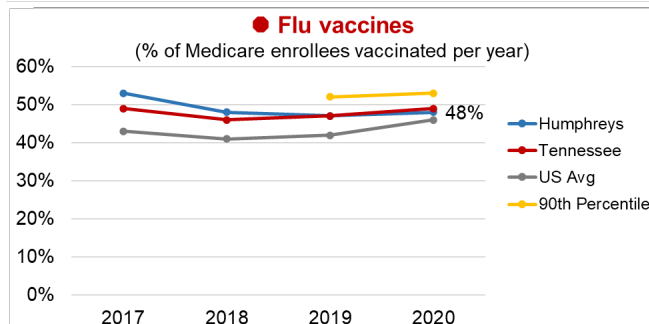
Clinical Care

Clinical care ranking is made up of seven indicators, and account for 20% of the county rankings. Humphreys County ranked 51st in clinical care out of 95 Tennessee counties.



● **Preventable hospital stays**
(hospitalization rate for ambulatory-sensitive conditions per 100,000 Medicare enrollees)

2020	
Humphreys County	6,559
Tennessee	5,320
US Avg	4,710
90th Percentile	2,761



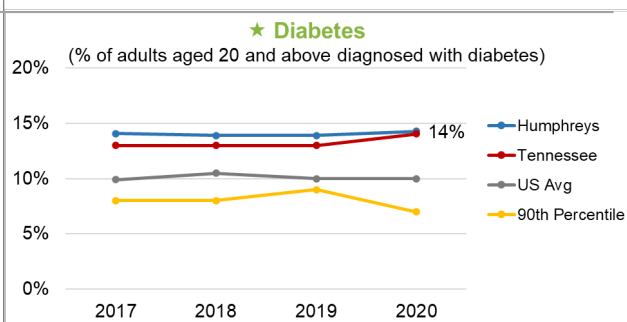
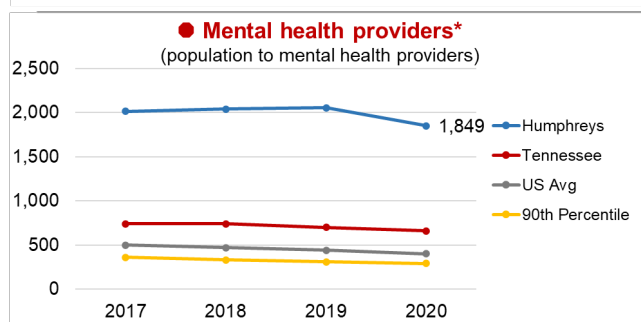
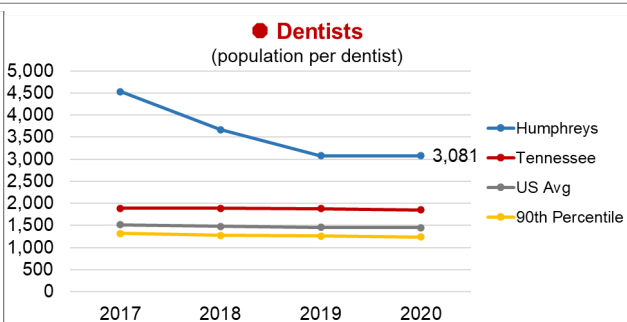
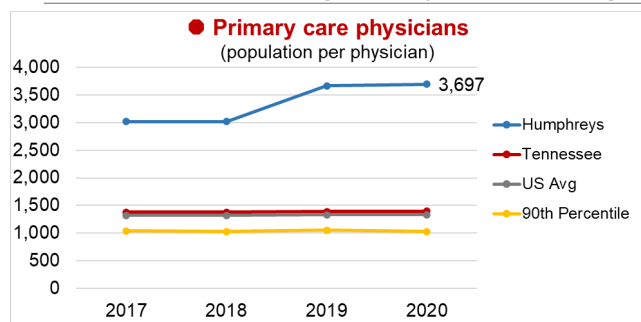
● **Mammography screening**
(% diabetic Medicare enrollees receiving HbA1c screening)
Higher is better

2020	
Humphreys County	40%
Tennessee	41%
US Avg	41%
90th Percentile	50%

Source: Uninsured - County Health Rankings; Small Area Health Insurance Estimates, 2011

Source: Preventable hospital stays, mammography screening – County Health Rankings, CMS Mapping Medicare Disparities Tool, 2017

Source: diabetic screening - County Health Rankings; Dartmouth Atlas of Health Care, Medicare claims data, 2017



Source: Pop to PCP - County Health Rankings; Area Health Resource File/American Medical Association, 2017

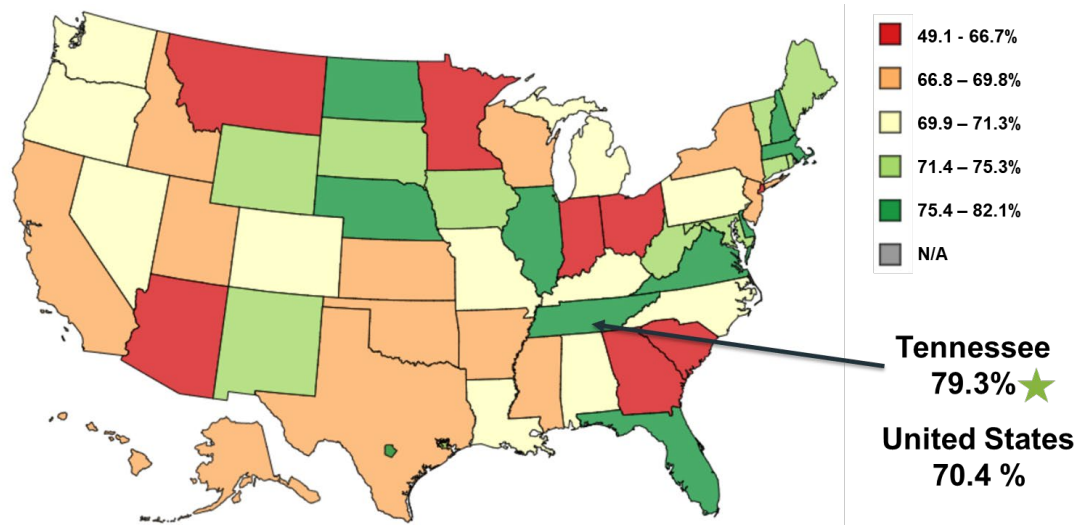
Source: Pop to Dentists - County Health Rankings; Area Health Resource File/National Provider Identification file, 2018

Source: Pop to mental health provider (psychiatrists, psychologists, licensed clinical social workers, counselors, marriage and family therapists and advanced practice nurses specializing in mental health) County Health Rankings; CMS, National Provider Identification, 2019

Clinical Care, cont.

The TN Department of Health is focusing on vaccinations. TN had a higher vaccination percentage than the U.S.

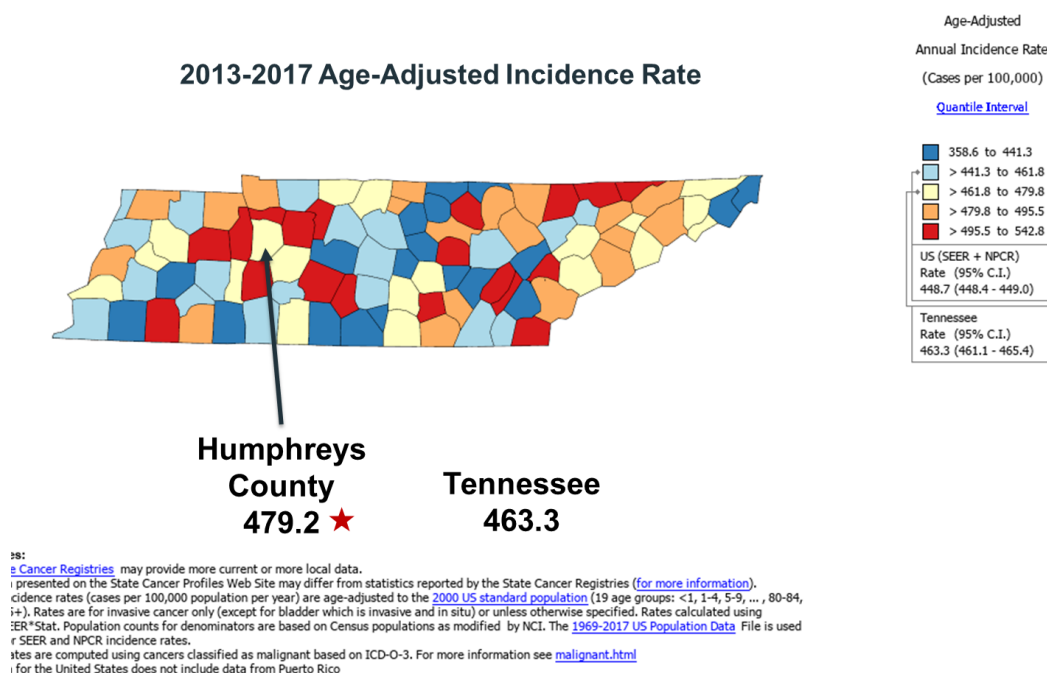
Vaccination Coverage Among Children



The percentage of vaccination coverage amount children 19-35 months was higher in TN than the U.S. The data is not available for Humphreys County.

Source: CDC, National Center for Immunization and Respiratory Diseases (2017 data posted 2018)

Cancer Incidence Rates – TN Counties



Cancer incidence rates (cases per 100,000 population) were higher in Humphreys County than in TN.

Clinical Care STRENGTHS

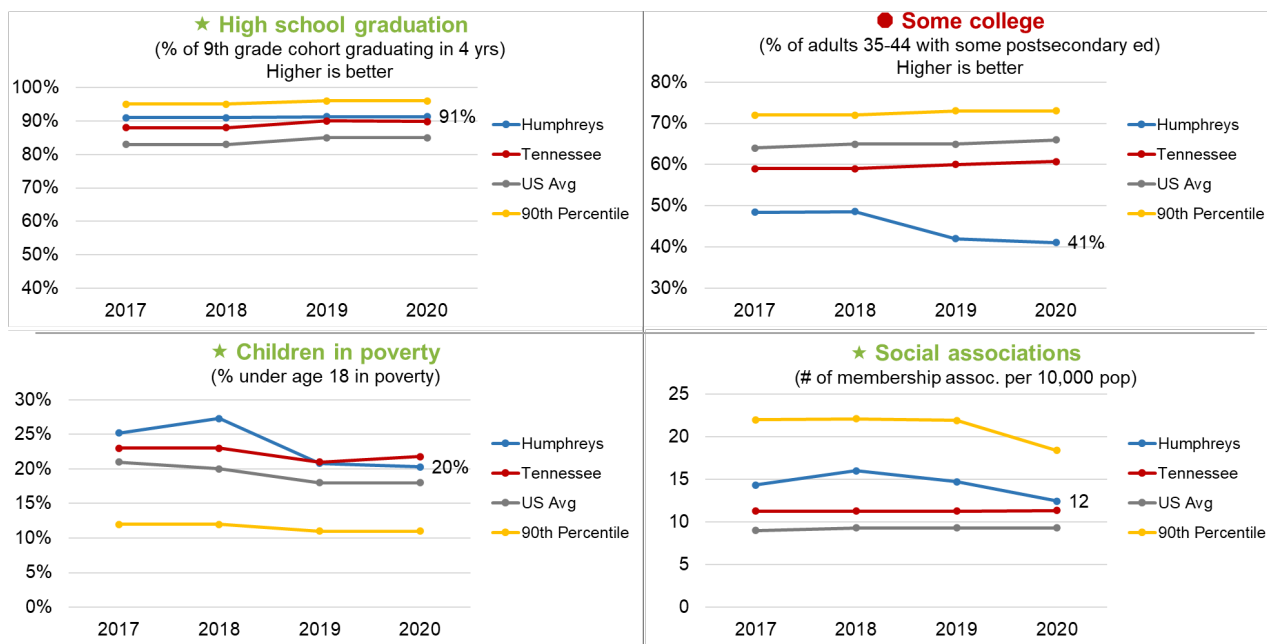
- The percent of population under sixty-five without health insurance was 11% in Humphreys County, the same as TN at 11% but higher than the U.S. at 10%.
 - The percentage of adults with diabetes was the same as TN at 14% but higher than the U.S. at 10%.
 - The percentage of vaccination coverage amount children 19-35 months was higher in TN at 79.3% than the U.S. at 70.4%
-

Clinical Care OPPORTUNITIES

- Preventable hospital stays in Humphreys County were 6,559 per 100,000 Medicare enrollees which was higher than TN (5,320) and the U.S. (4,710). Hospitalization ambulatory-care sensitive conditions, which are diagnoses treatable in outpatient settings, suggests that the quality of care provided in the outpatient setting was less than ideal. This measure may also represent a tendency to overuse hospitals as a main source of care. Preventable Hospital Stays could be classified as both a quality and access measure, as some literature describes hospitalization rates for ambulatory care-sensitive conditions primarily as a proxy for access to primary health care. Source: CHR; Brumley R, Enguidanos S, Jamison P, et al. Increased satisfaction with care and lower costs: Results of a randomized trial of in-home palliative care. J Am Geriatric Soc. 2007;55:993-1000.
 - The percent of Medicare enrollees with flu vaccines per year was lower in Humphreys County (48%) than TN (49%) but higher than the U.S. at 46%.
 - Mammography screening was lower in Humphreys County at 40% than TN at 41% and the U.S. at 41%.
 - The population per primary care physician was higher in Humphreys County than TN and the U.S. at 3,697.
 - The population per mental health providers was higher in Humphreys County than TN and the U.S. at 1,849.
 - The population per dentists was higher in Humphreys County than TN than the U.S. at 3,081.
 - The cancer incidence rate in Humphreys County was 479.2 cases per 100,000 population which was higher than TN (463.3), placing Humphreys County in the fourth quintile in TN.
-

Social & Economic Factors

Social and economic factors account for 40% of the county rankings. There are eight measures in the social and economic factors category. Humphreys County ranked 50th in social and economic factors out of 95 Tennessee counties.

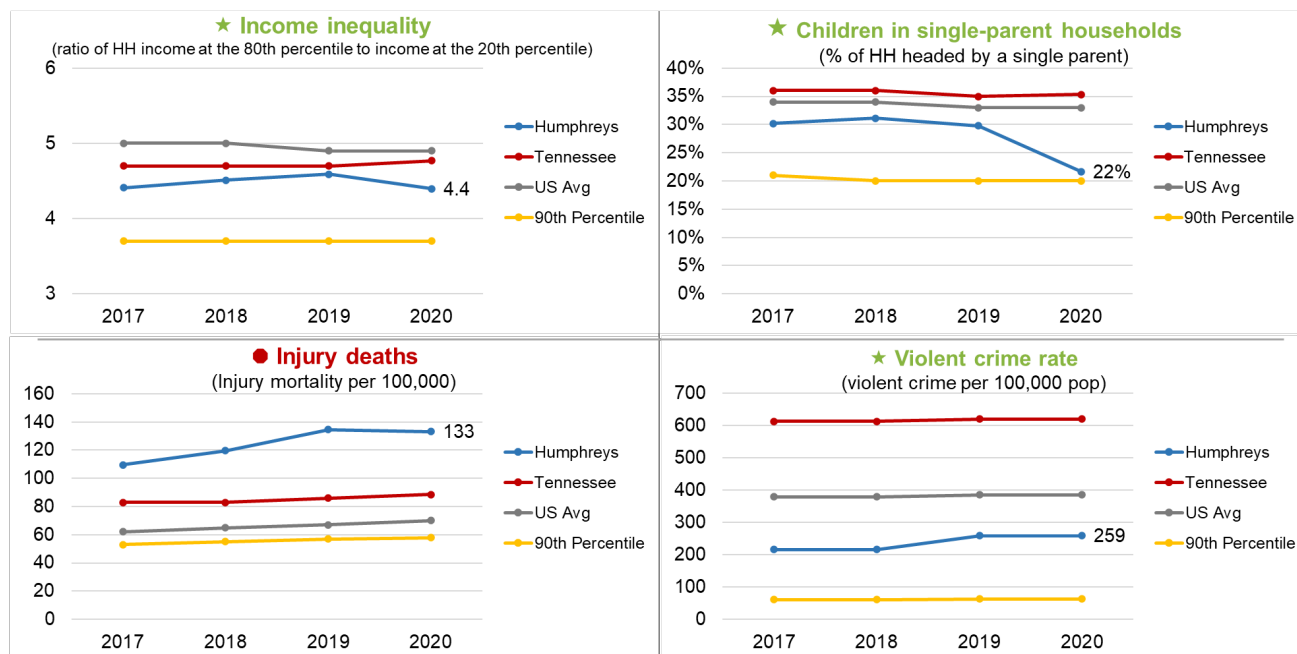


Source: High School graduation – County Health Rankings; TN Dept of Public Instruction, 2016-2017

Source: Some college - County Health Rankings; American Community Survey, 5-year estimates, 2014-2018.

Source: Children in poverty - County Health Rankings; U.S. Census, Small Area Income and Poverty Estimates, 2018

Source: Social associations - County Health Rankings; County Business Patterns, 2017



Source: Income inequality and children in single-parent households - County Health Rankings; American Community Survey, 5-year estimates 2014-2018. Source: Injury deaths – County Health Rankings; CDC WONDER mortality data, 2014-2018. Source: Violent crime - County Health Rankings; Uniform Crime Reporting – FBI, 2014 & 2016

Social & Economic Factors Cont.

Social & Economic Factors STRENGTHS

- The high school graduation rate was higher in Humphreys County at 91% than TN at 90% and the U.S. at 85%.
 - Social associations were higher in Humphreys County at 12 memberships per 10,000 population than TN at 11 and the U.S. at 9 memberships. Associations include membership organizations such as civic organizations, bowling centers, golf clubs, fitness centers, sports organizations, religious organizations, political organizations, labor organizations, business organizations, and professional organizations.
 - The children in poverty percentage was lower for Humphreys County (20%) than TN (22%) but higher than the U.S. (18%).
 - Income inequality represents the ratio of household income at the 80th percentile compared to income at the 20th percentile. Income inequality was lower in Humphreys County at 4.4 than in TN at 4.8 and the U.S. at 5.
 - The percentage of children in single-parent households was 22% in Humphreys County, which is lower than TN (35%) and the U.S. (33%).
 - The poverty estimates for 2019 showed Humphreys County at 13.6%, lower than TN (15.2%) but higher than the U.S. (13.1%).
-

Social & Economic Factors OPPORTUNITIES

- 41% of Humphreys County adults had some postsecondary education which was lower than TN (61%) and the U.S. (66%).
- Injury deaths were higher in Humphreys County at 133 per 100,000 deaths compared to TN at 89 and the U.S. at 70.
- The violent crime rate in Humphreys County was 744 violent crimes per 100,000 population, which was lower at 259 violent crimes per 100,000 population than in TN at 621 and the U.S. at 386.
- The median household income in Humphreys County was \$44,762, lower than TN at \$53,346.

Physical Environment

Physical environment contains four measures in the category and accounts for 10% of the county rankings. Humphreys County ranked 88th in physical environment. out of 95 Tennessee counties.

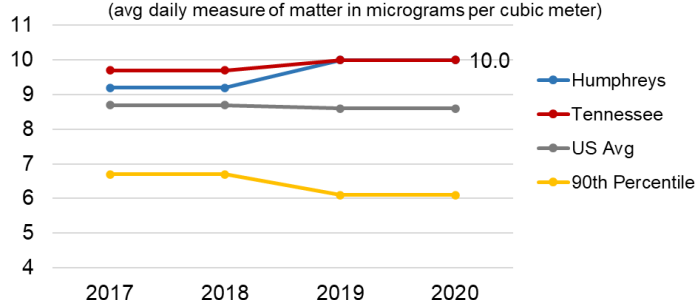
● Drinking water violations

	2018	2019	2020
Humphreys County	No	No	Yes

New Johnsonville Water Dept. Nov 20, 2018 - Trihalomethanes

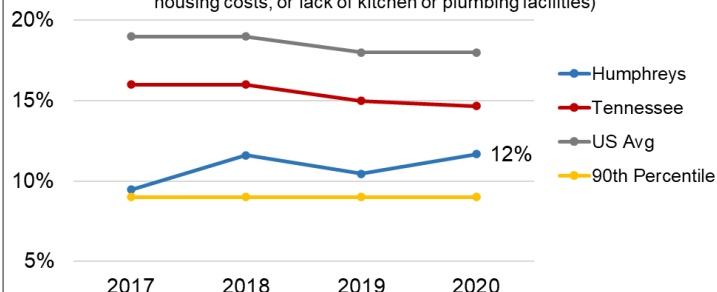
● Air pollution - particulate matter

(avg daily measure of matter in micrograms per cubic meter)



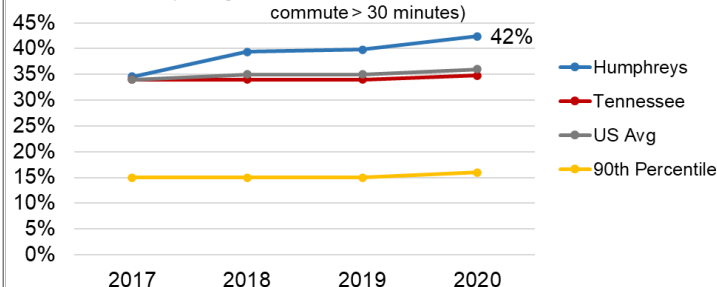
★ Severe housing problems

(% of hh with at least 1 of 4 housing problems: overcrowding, high housing costs, or lack of kitchen or plumbing facilities)



Long commute- driving alone

(among workers who commute alone, the % that commute > 30 minutes)



Source: Drinking water violations – County Health Rankings; EPA, Safe Drinking Water Information System, 2018. Source: Severe housing problems – County Health Rankings; HUD Comprehensive Housing Affordability Strategy data, 2012-2016. Source: Driving alone to work and long commute – County Health Rankings; American Community Survey, 5-year estimates, 2014-2018. Source: Air pollution – County Health Rankings; CDC National environmental Health Tracking Network, 2014

Physical Environment STRENGTHS

- Humphreys County had a lower percentage of severe housing problems at 12% than TN at 15% and the U.S. at 18%.

Physical Environment OPPORTUNITIES

- Air pollution measured by the average daily measure of matter in micrograms per cubic meter was 10.0 in Humphreys County, the same as TN (10.0), but higher than the U.S. (9).
- 42% of workers in Humphreys County who commute alone commute over 30 minutes, higher than TN and the U.S. both at 36%
- Humphreys County had drinking water violations. With additional research on the EPA website, the violation was at the New Johnsonville Water Department in 2018 for excessive trihalomethanes.

There were Four Broad Themes that Emerged in this Process:

- Humphreys County needs to continue to create a “Culture of Health” which permeates throughout the towns, employers, churches, and community organizations to engender commitment to health improvement.
- There is a direct relationship between health outcomes and affluence (income and education). Those with the lowest income and education generally have the poorest health outcomes.
- While any given measure may show an overall good picture of community health, subgroups such as the lower income census tracts may experience lower health status measures.
- It will take a partnership with a wide range of organizations and citizens pooling resources to meaningfully impact the health of the community. However, Humphreys County has many assets to improve health.



Photo Credit: Three Rivers Hospital Facebook

Results of the CHNA: Community Health Summit Prioritized Health Needs

Prioritization of Health Needs

Prioritization Criteria

Interviewees were asked, based on all we had discussed, their area of expertise, and experience, what were the top three significant health needs or issues.

Most Significant Community Health Needs

The following needs were prioritized by the citizens interviewed.

1. Substance use disorder
2. Healthy eating/ active living – obesity
3. Access to care
4. Mental health
5. Chronic disease
6. Others:
 1. Higher paying jobs
 2. More education and continued education
 3. Childhood abuse and development
 4. Motivation to change



Photo Credit: visithumphreys.com

Impact of 2017 CHNA and Implementation Plan

Impact

Obesity		
Actions	Outcomes	Additional Information

Impact of 2017 CHNA and Implementation Plan, cont.

Impact

Substance Abuse		
Actions	Outcomes	Additional Information

Impact of 2017 CHNA and Implementation Plan, cont.

Impact

Access		
Actions	Outcomes	Additional Information

Impact of 2017 CHNA and Implementation Plan, cont.

Impact

Tobacco use		
Actions	Outcomes	Additional Information

Impact of 2017 CHNA and Implementation Plan, cont.

Impact

Chronic Disease		
Actions	Outcomes	Additional Information
Mental Health		
Actions	Outcomes	Additional Information

Community Health Needs Assessment for Humphreys County

Completed by Three Rivers Hospital in partnership with:

Stratasan



Appendix

Community Asset Inventory

The document contains a list of community assets and resources that can help improve the health of the community and assist with implementation of the plan accompanies this document. The interviews also identified community resources to improve health, which are listed on page 21 of the Community Health Needs Assessment.



Photo Credit: Tennessee State Parks

2020

Humphreys County, TN

Community Asset Inventory/Resource Guide

*Paper copies of this document may be obtained at: Three Rivers Hospital
451 Highway 13S, Waverly, TN 37185 or by phone 931.296.4203 or via the hospital website
<https://www.threerivershospital.com>*

Table of Contents

Access to Care	48
Hospital	48
EMS	48
Family Physicians	48
Home Health & Hospice	48
Health Department	48
Rural Health Clinics	48
Long-term Care	48
Assisted Living	48
Insurance Assistance	49
Obesity – Healthy Eating Active Living	49
Substance Use Disorder	50
Chronic Disease	50
Education	51
Hotlines	52
Sources	53
Update & Change Form	54

Access to Care

Hospital

Three Rivers Hospital
451 TN-13
Waverly, TN 37185

EMS Ambulance Services

Humphreys County Ambulance Service
112 West Main Street
Waverly, TN 37185

Lifeguard Ambulance Services
Waverly, TN 37185
(931) 296-0020

Air Evac Lifeteam
336 TN-13
Waverly, TN 37185

Family Medicine Physicians

George Mathai M.D.
224 Long Street
New Johnsonville, TN 37134

Arthur Walker M.D.
806 East Main Street
Waverly, TN 37185

Lawrence Jackson M.D.
102 Hillwood Drive
Waverly, TN 37185

Wallace McClure M.D.
450 Powers Boulevard
Waverly, TN 37185

Home Health and Hospice Services

Tennessee Quality Care
330 E Main St.
Waverly, TN 37185

Unity Hospice Care
107 West Main St.
Waverly, TN 37185

Health Department

Humphreys County Health Department
222 Holly Lane
Waverly, TN 37185
(931) 296-6531

Health Council

(931) 296-6531

Rural Health Clinics

Waverly Clinic
806 E Main Street
Waverly, TN 37185

New Johnsonville Family Health Center
224 Long Street
New Johnsonville, TN 37134

Memorial Clinic
203 E Commerce Street
Waverly, TN 37185

McEwen Clinic
10161 Hwy 70 East
McEwen, TN 37101

Long-term Care

Humphreys County Care and Rehab
104 Fort Hill Road
Waverly, TN 37185
(931) 296-2532

Waverly Healthcare and Rehabilitation Center
895 Powers Blvd.
Waverly, TN 37185
(931) 296-7552

Assisted Living

Magnolia Place
811 West Main St
Waverly, TN 37185

Insurance Assistance

Department of Human Services
1203 Hwy 70 West
Waverly, TN 37185

We Care We Help (United Way of Humphreys County)

122 W Main Street
Waverly, TN 37185

Healthy Eating – Active Living

Waverly Senior Citizen Center
206 N Church Street
Waverly, TN 37185

New Johnsonville Senior Center

528 Broadway Avenue
New Johnsonville, TN 37134

McEwen Senior Center

23 Fortner Road
McEwen, TN 37101

Johnsonville State Historic Park

90 Nell Beard Road
New Johnsonville, TN 37134

Bucksnot Trailride Inc.

2887 Poplar Grove Road
McEwen, TN 37101

C L Edwards Memorial Park

414 Ashe Avenue
New Johnsonville, TN 37134

Waverly City Park

Waverly, TN 37185

Healthy Eating – Active Living, cont.

Bone's Canoe & Campground
16520 Bakerville Rd
Hurricane Mills, TN 37078

Humphreys County Dixie League

909 Airport Road
Waverly, TN 37185

MCHRA – Meals on Wheels

(931) 296-7753



Photo credit: Dixie League Facebook

Substance Use Disorder Resources

Hope Center Ministries
1510 North Clydeton Road
Waverly, TN 37185
(931) 296-9711

Waverly Group AA meetings
Public Works Bldg.
301 N. Church St
Waverly TN 37185

Last Chance Group
Christ Community Church
635 St. Patrick Street
McEwen, TN 37101

Humphreys County Drug Alliance
P. O. Box 223
Waverly, TN 37185
931-933-8748

Tobacco

Tennessee Tobacco QuitLine
1-800-784-8669

Mental Health Resources

Mental Health Cooperative
220 Skyline Circle
Dickson, TN 37055

Chronic Disease Resources

Three Rivers Hospital
451 TN-13
Waverly, TN 37185

Humphreys County Health Department
222 Holly Lane
Waverly, TN 37185

Community Organizations & Programs

Little Black Dress Event for Women's Health
115 West Main Street
Waverly, TN 37185

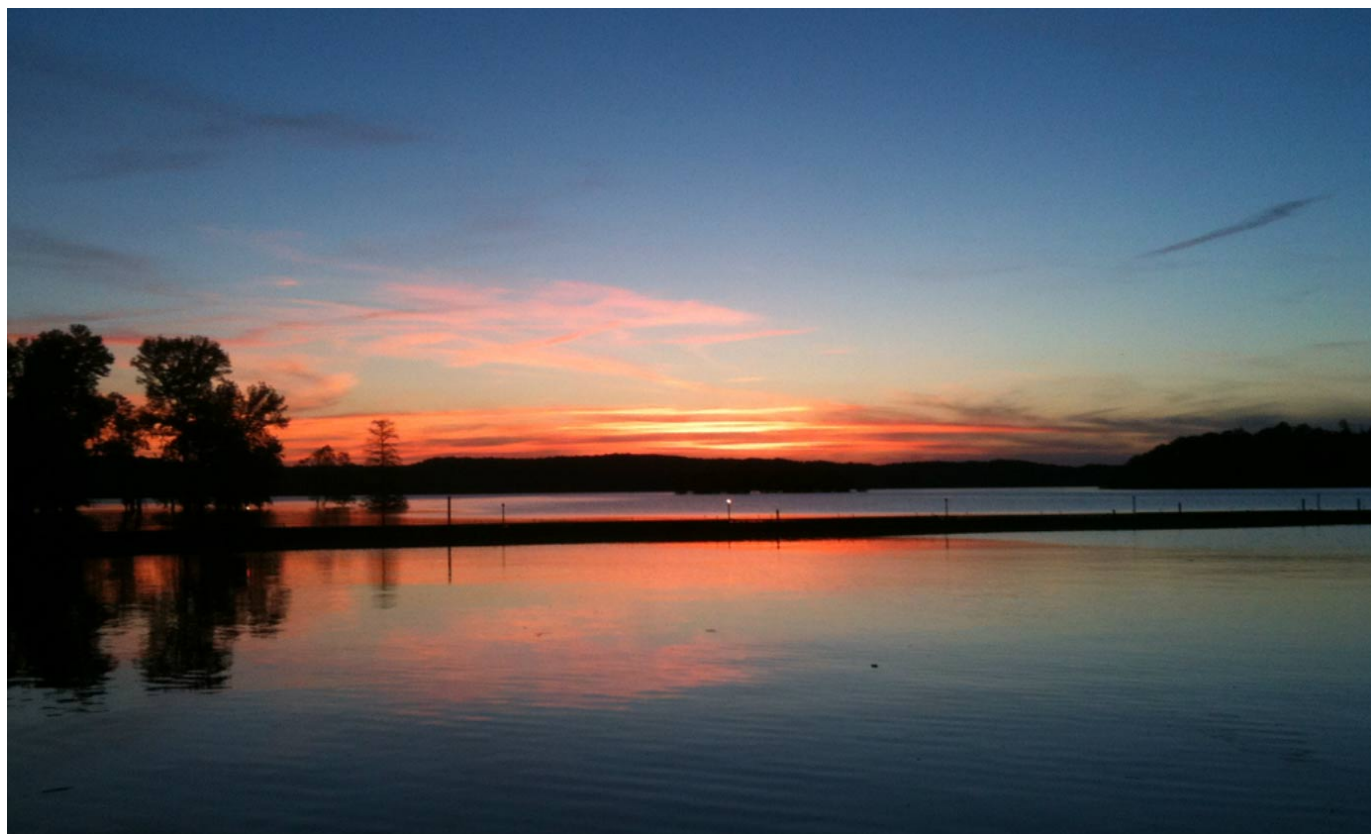


Photo Credit: Visit Humphreys TN

Education

Humphreys City Board of Education
2443 Highway 70 East
Waverly, TN 37185

Lakeview Elementary
802 Long Street
New Johnsonville, TN 37134

McEwen Elementary
220 Swift St East
McEwen, TN 37101

McEwen Middle School
365 Melrose Street
McEwen, TN 37101

McEwen High School
335 Melrose Street
McEwen, TN 37101

Waverly Elementary
612 E Main Street
Waverly, TN 37185

Waverly Junior High
520 E Main Street
Waverly, TN 37185

Waverly Central High School
1325 US-70
Waverly, TN 37185

Nashville State Community College –
Humphreys County Campus
695 Holly Lane
Waverly, TN 37185



Photo Credit: Visit Humphreys TN

National Hotlines

National Suicide Prevention Lifeline

800-273-TALK or 800-237-8255

National Runaway Safeline

1-800-RUNAWAY

National Centers for Disease Control

1-800-232-4636

Gay, Lesbian, Bisexual and Transgender

1-888-843-4564

HIPS Hotline

1-800-676-HIPS

National Sexually Transmitted Disease

1-800-227-8922

Women Alive

1-800-554-4876

AIDS Info

1-800-HIV-0440

Project Inform

1-800-822-7422

DMRS Investigations

1-888-633-1313

Mobile Crisis

1-800-681-7444

Domestic Violence

1-800-356-6767

Spanish Domestic Violence

1-800-942-6908

Poison Control Center

1-800-222-1222

Veterans Crisis Line

800-273-8255 Press 1

National Youth Crisis

800-442-HOPE (4673)

National Missing Children

1-800-235-3535

National Sexual Assault

1-800-656-4673

Alcohol Hotline

1-800-331-2900

Alcohol Treatment Referral

1-800-252-6465

National Drug Abuse

1-800-662-4357

Poison Control

1-800-942-5969

National Homeless

1-800-231-6946

National Elder Abuse

1-800-252-8966



Photo Credit: Fall Bi-Annual Horseback Trail Ride

Sources

Public Safety

<https://www.waverlypublicsafety.com/>

<https://www.humphreyscountycommerce.com/moving-here.html>

Access to Care

<https://humphreystn.com/healthcare/index.html>

<https://www.humphreyscountycommerce.com/moving-here.html>

Mental Health Services

<https://humphreystn.com/healthcare/index.html>

Insurance Assistance

<https://www.tn.gov/humanservices.html>

Substance Abuse Resources

<https://humphreystn.com/healthcare/index.html>

Chronic Diseases

<https://humphreystn.com/healthcare/index.html>

Nutrition, Physical Activity, Healthy Living

<http://tennessee.dixie.org/site/ClientSite/article/1396034>

Education

<https://www.hcss.org>

<https://www.nsc.edu/campuses/humphreys-county>

Hotlines

<http://www.pleaselive.org/hotlines/>

Pictures

<https://www.facebook.com/pages/category/Nonprofit-Organization/McEwen-Dixie-League-124983277557432>

<https://www.humphreystn.com>

<https://www.visithumphreys.com/event/fall-bi-annual-horseback-trail-ride>

<https://www.visithumphreys.com/event/christmas-parade-2>

<https://www.facebook.com/3rivershospital/photos/a.479150579185799/920386881728831/?type=3&theater>

<https://www.visithumphreys.com/place/eagle-bay-marina-and-campground>

To update or add information, complete the form below

Name of Organization:

Contact Name:

Phone #:

Fax #:

Email:

Web page:

Mailing Address:

List services:

Please describe your organization's purpose, services, etc.

Submit updated information to:

Three Rivers Hospital Marketing Department

Community Asset Inventory/ Resource Guide

Completed by Stratasan in partnership with:

Three Rivers Hospital

