

Ascension Saint Alexius

Implementation Strategy for the 2024 CHNA Cook County, Illinois



Ascension

The purpose of this Implementation Strategy (IS) is to describe how the hospital plans to address prioritized health needs from its current Community Health Needs Assessment (CHNA). The significant health needs the hospital does not intend to address are identified, and a rationale is provided. Special attention has been given to the needs of individuals and communities at increased risk for poor health outcomes or experiencing social factors that place them at risk.

Ascension Saint Alexius
1555 Barrington Rd, Hoffman Estates, IL 60169
healthcare.ascension.org
847-843-2000
36-4195126

The authorized governing body approved the tax year 2024 Implementation Strategy on September 24, 2025 (2024 tax year) and applies to the following three-year cycle: July 1, 2025 - June 30, 2028. This report, as well as the previous report, can be found on our public website.

We value the community's voice and welcome feedback on this report. Please visit our public website (<https://healthcare.ascension.org/chna>) to submit your comments.

Table of Contents

Table of Contents	3
Introduction	4
About Ascension	4
Ascension Illinois	4
Ascension Saint Alexius	4
Overview of the Implementation Strategy	6
Needs Prioritization	6
Needs That Will Be Addressed	6
Needs That Will Not Be Addressed	8
Written Comments	9
Approval and Adoption of the IS	9
Action Plans	10
Evaluation	17

Introduction

As one of the leading non-profit and Catholic health systems in the United States, Ascension is committed to delivering compassionate, personalized care to all, with special attention to impoverished and vulnerable persons.

About Ascension

Ascension is one of the nation's leading non-profit and Catholic health systems, with a Mission of delivering compassionate, personalized care to all with special attention to those most vulnerable. In FY2024, Ascension provided \$2.1 billion in care of persons living in poverty and other community benefit programs. Across 16 states and the District of Columbia, Ascension's network encompasses approximately 106,000 associates, 26,000 aligned providers, 105 wholly owned or consolidated hospitals, and 34 senior living facilities. Additionally, through strategic partnerships, Ascension holds an ownership interest in 26 other hospitals.

Ascension's Mission provides a strong framework and guidance for the work done to meet the needs of communities across the US. It is foundational to transform healthcare and express priorities when providing care and services, particularly to those most in need.

Mission: Rooted in the loving ministry of Jesus as healer, we commit ourselves to serving all persons with special attention to those who are poor and vulnerable. Our Catholic health ministry is dedicated to spiritually-centered, holistic care which sustains and improves the health of individuals and communities. We are advocates for a compassionate and just society through our actions and our words.

For more information about Ascension, visit <https://www.ascension.org/>.

Ascension Illinois

Serving Illinois since 1868, Ascension Illinois operates five hospitals and more than 80 sites of care in the Chicagoland area. The organization includes 300 providers as part of Ascension Medical Group and more than 5,000 associates serving the patients and communities across Chicagoland. Ascension is a faith-based healthcare organization dedicated to transformation through innovation across the continuum of care.

For more information about Ascension Illinois, visit www.ascension.org/illinois.

Ascension Saint Alexius

As a Ministry of the Catholic Church, Ascension Saint Alexius is a non-profit hospital that provides medical care to the Village of Hoffman Estates and the surrounding communities. Serving Illinois since 1979, Ascension Saint Alexius is continuing the long and valued tradition of addressing the health of



Ascension Saint Alexius

the people in our community, following in the footsteps of legacy Alexian Brothers, a Roman Catholic order.

Saint Alexius includes the Ascension Saint Alexius Women & Children's Hospital on its Hoffman Estates campus as well as 24/7 level II trauma emergency care, advanced surgical care including heart, vascular and orthopedics.

For more information about Ascension Saint Alexius, visit:

<https://healthcare.ascension.org/locations/illinois/ilchi/hoffman-estates-ascension-saint-alexius>

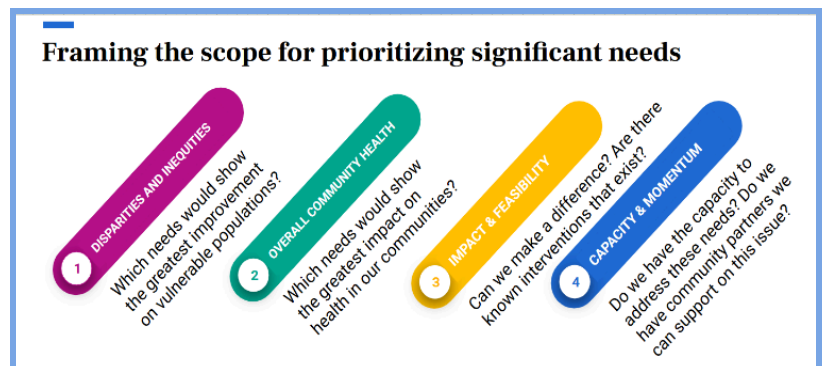
Overview of the Implementation Strategy

Needs Prioritization

Included in Code Section 501(r)(3) is the requirement that hospitals must provide a description of the process and criteria used to determine the most significant health needs of the community identified through the CHNA, along with a description of the process and criteria used to determine the prioritized needs to be addressed by the hospital. Accordingly, Ascension Saint Alexius used a phased prioritization approach to identify the needs of the community. The first step was to determine the broader set of identified needs. The CHNA assessment narrowed identified needs to a group of significant needs determined most crucial for community stakeholders to address.

In the third phase, significant needs were further narrowed to a set of “prioritized needs.” Ascension defines **prioritized needs** as the significant needs that the hospital has prioritized to respond to through the three-year CHNA implementation strategy. In framing the scope for prioritizing significant needs, the following criteria were used as discussion:

- Disparities & Inequities: Which needs would show the greatest improvement on vulnerable populations?
- Overall Community Health: Which needs would show the greatest impact on health in our communities?
- Impact & Feasibility: Can we make a difference? Are there known interventions that exist?
- Capacity & Momentum: Do we have the capacity to address these needs? Do we have community partners we can support on this issue?



Needs That Will Be Addressed

Based on discussion and feedback, hospital senior leadership as well as the market community leaders selected the prioritized needs outlined below for its tax year 2024 CHNA implementation strategy:

- **Healthcare Access & Affordability (Access to Care - Clinical Care):** Individuals in the community face major barriers in obtaining necessary medical care including lack of affordable medical care (including dental and vision) and medications, difficulties navigating insurance, and long wait times for specialists. 61% of community survey respondents cited lack of access to care as a major issue that includes concerns for long wait times for specialist appointments, high costs, and difficulties navigating insurance benefits. Participants said high insurance costs limit access to medical services including necessary medications and dental services, while many are unclear about their eligibility for healthcare coverage. Community partners noted barriers

such as economic constraints, limited healthcare services, and cultural/language challenges for individuals in the community.

- **Mental Health & Youth Well-Being (*Mental Health - Quality of Life*):** Mental health concerns, including depression and anxiety, were frequently identified as top health priorities. The PSA has a lower mental health provider rate, particularly bilingual and culturally competent professionals, compared to county and national levels, creating significant barriers to care. Social media impact, stress, depression, bullying, vaping, and lack of school-based mental health support are pressing youth concerns. Mental health was a top concern (33.0%) in community surveys with 42% cited difficulty accessing mental health services & lack of school-based counseling; community partners also expressed that mental health challenges were one of the most pressing community issues, especially services for Limited English Proficient individuals. 40.3% of respondents cited social media as a major concern for youth; 37.1% reported high stress levels among youth due to academic and financial pressures. Community partners highlighted teen birth rates exceeding county, state, and national averages, particularly in Streamwood.
- **Chronic Disease (*Diabetes, Obesity, Heart Disease - Chronic Conditions*):** Chronic diseases such as diabetes, obesity, and heart disease were identified as key health concerns. The prevalence of diabetes in Elgin (60120: 12.8%, 60123: 12.3%) is higher than state and national averages. Preventive health screenings, including colorectal cancer and mammograms, fall below Healthy People 2030 targets. Diabetes (35.1%) and heart disease/stroke (26.9%) were top health concerns on the community input survey. Respondents noted difficulty in managing chronic diseases due to healthcare access barriers as well as difficulty accessing health food options, diabetes education resources, screenings and heart-related medications. Access to community services (41%) was emphasized by respondents including the need for wellness programs (including weight loss, nutrition and fitness including senior & bilingual offerings), transportation support, and better outreach about existing services.
- **Social Determinants of Health (*Income - SDoH & Housing - SDoH*):** The social determinants of health of food insecurity and housing instability challenges were identified as top two contributors to poor health outcomes. These barriers disproportionately impact underserved communities. Food insecurity remains a pressing issue, particularly in Elgin, Palatine, and Hanover Park. Access to affordable and nutritious food is a barrier for many, impacting chronic disease rates. Rising housing costs and economic disparities contribute to housing instability. 33% of survey respondents cited food insecurity a top concern, particularly in areas with high poverty rates. Community partners noted food insecurity as the most pressing health issue. Partners expressed concern over affordability and access to fresh and nutritious foods for families managing chronic illnesses and relying on food assistance programs. Survey respondents shared concerns about eviction risks and a lack of affordable housing options; 21% of survey respondents cited housing affordability as a major concern and stressor; Focus group participants said the rising cost of living has not been reflected in wage increases.

Ascension Saint Alexius understands the importance of all the community's health needs. It is committed to playing an active role in improving the health of the people in the communities it serves.

For this implementation strategy, Ascension Saint Alexius has focused its efforts on the above priorities.

Needs That Will Not Be Addressed

All of the significant needs were selected for prioritization to be addressed in this CHNA cycle.

Written Comments

This IS has been made available to the public and is open for public comment. Questions or comments about this Implementation Strategy can be submitted via the website:

<https://healthcare.ascension.org/chna>.

Approval and Adoption of the IS

To ensure the Ascension Saint Alexius' efforts meet the needs of the community and have a lasting and meaningful impact, the tax year 2024 Implementation Strategy was presented and adopted by Ascension Illinois Quality Board of Directors on September 24, 2025. Although an authorized body of the hospital must adopt the IS to be compliant with the provisions of the Affordable Care Act, adoption of the IS also demonstrates that the board is aware of the IS, endorses the priorities identified, and supports the action plans that have been developed to address prioritized needs.

Action Plans

The IS below is based on prioritized needs from the hospital's most recent CHNA. These strategies and action plans represent where the hospital will focus its community efforts over the next three years.

STRATEGY #1: PROVIDE PUBLIC HEALTH INSURANCE ENROLLMENT SERVICES	
Hospital(s) Name(s) Ascension Saint Alexius	
Prioritized Health Need #1 Healthcare Access & Affordability	
Objective By June 30, 2028, there will be an increase of individuals provided with healthcare enrollment services from FY25 baseline.	
Strategy Advocatia Partnership	
Collaborators	Resources
Other Ascension Hospitals: Ascension Alexian Brothers, Ascension Saint Joseph Chicago	Other Ascension hospital(s): Leader and staff time donated, education collateral, marketing resources, and others
Collaborators: Ascension Medical Group (AMG), Community Based Organizations, Faith Based Institutions, Food Pantries, Libraries, Immigrant Welcoming Centers	Collaborators: in-kind space for events, promotion of services
Consultants: Advocatia and/or other healthcare enrollment partners	Consultants: Advocatia program platform & consultants, data
Other non-profit hospital: N/A	Other non-profit hospital: N/A
Budget <ul style="list-style-type: none"> Advocatia Technology and Consultation Fees 	
ACTION STEPS	ROLE/OWNER
Appoint Associate Lead for this strategy	Ascension Illinois Community Health
Promote awareness of services via flyers, social media, Ascension and Community partner newsletters	Ascension Saint Alexius Community Health, External Communications
Identify external partners that need enrollment information	Ascension Illinois Community Benefit and Community Health
Identify and establish opportunities for enrollment in the community	Ascension Illinois Community Benefit and Community Health
Monitor work, evaluate progress, report outcomes	Ascension Illinois Community Health
ANTICIPATED IMPACT	
The anticipated impact of these actions is to increase access to healthcare services for individuals who are underinsured or uninsured.	

STRATEGY #2: PROVIDE ACCESS TO MEDICATION ASSISTANCE SERVICES	
Hospital(s) Name(s) Ascension Saint Alexius	
Prioritized Health Need #1 Healthcare Access & Affordability	
Objective By June 30, 2028, there will be an increase of individuals provided with medication assistance services from FY25 baseline.	
Strategy Dispensary of Hope Program	
Collaborators	Resources
Other Ascension Hospitals: Ascension Alexian Brothers	Other Ascension hospital(s): staff time donated, community investment, education collateral, marketing resources, and others
Collaborators: Ascension Medical Group, Community Based Organization, Faith Based Institutions, local physicians	Collaborators: pharmacy staff, promotion of services
Consultants: N/A	Consultants: N/A
Other non-profit hospital: N/A	Other non-profit hospital: N/A
Budget <ul style="list-style-type: none"> Dispensary of Hope Program Fees 	
ACTION STEPS	ROLE/OWNER
Appoint Associate Lead for this strategy	Ascension Illinois Community Health
Promote awareness of pharmacy services via flyers, social media, Ascension and Community partner newsletters	Ascension Illinois Community Health, Ascension Saint Alexius Pharmacy, Ascension Illinois Marketing/Communications
Identify external partners that need medication assistance information.	Ascension Saint Alexius
Monitor work, evaluate progress, report outcomes	Ascension Illinois Community Health
ANTICIPATED IMPACT	
The anticipated impact of these actions is to increase access to medications for individuals who are underinsured or uninsured.	

STRATEGY #3: PROVIDE ACCESS TO PRENATAL CARE SERVICES	
Hospital(s) Name(s) Ascension Saint Alexius	
Prioritized Health Need #1 Healthcare Access & Affordability	
Objective By June 30, 2028, there will be an increase of individuals provided with access to prenatal services from FY25 baseline.	
Strategy Greater Family Health Partnership	
Collaborators	Resources
Other Ascension Hospitals: Ascension Alexian Brothers	Other Ascension hospital(s): staff time donated, community investment, education collateral, marketing resources, and others
Collaborators: Greater Family Health	Collaborators: care coordination of prenatal services, data
Consultants: N/A	Consultants: N/A
Other non-profit hospital: N/A	Other non-profit hospital: N/A
Budget <ul style="list-style-type: none"> Annual community investment 	
ACTION STEPS	ROLE/OWNER
Appoint Associate Lead for this strategy	Ascension Illinois Community Health
Identify external partners that provide prenatal services	Ascension Saint Alexius
Provide support and assistance for needed services	Ascension Saint Alexius
Monitor work, evaluate progress, report outcomes	Ascension Illinois Community Health
ANTICIPATED IMPACT	
The anticipated impact of these actions is increased access to prenatal services and referrals for individuals in need of prenatal care.	

STRATEGY #4: PROVIDE ACCESS TO COMMUNITY RESOURCE CENTER (CRC)	
Hospital(s) Name(s) Ascension Saint Alexius	
Prioritized Health Need #1 Healthcare Access & Affordability	
Objective By June 30, 2028, establish a Community Resource Center (CRC) that will provide a structured framework for connecting individuals and families with needed resources & services.	
Strategy Community Resource Center (CRC)	
Collaborators	Resources
Other Ascension hospital(s): Ascension Alexian Brothers and Ascension Alexian Brothers Behavioral Health Hospital	Other Ascension hospital(s): Staff time donated, community investment, donated space within 1515 Lake Street building
Collaborators: Partners for Our Communities, Greater Family Health, CEDA, Community Based Organizations, School District, Park District	Collaborators: care coordination; data
Consultants: N/A	Consultants: N/A
Other non-profit hospital: N/A	Other non-profit hospital: N/A
Budget <ul style="list-style-type: none"> • Community investment(s) • Cost of in-kind space • Cost of in-kind staff support • Cost of in-kind resources & materials 	
ACTION STEPS	ROLE/OWNER
Appoint an Associate Lead for this strategy	Ascension Illinois Community Health
Identify framework for Community Resource Center (CRC)	Ascension Saint Alexius & Ascension Alexian Brothers
Identify external partners that may have a need for support and resources.	Ascension Illinois Community Health, Community Benefit, Ascension Saint Alexius, Ascension Alexian Brothers
Establish Community Resource Center (CRC) Collaborative Committee	Ascension Illinois Community Health
Create project timeline for Community Resource Center (CRC)	Ascension Illinois Community Health, Ascension Saint Alexius and Ascension Alexian Brothers
Monitor work, evaluate progress, report outcomes.	Ascension Illinois Community Health
ANTICIPATED IMPACT	
The anticipated impact of these actions is increased access to community resources, services and referrals for individuals in need of services in the community.	

STRATEGY #5: PROVIDE ACCESS TO MENTAL HEALTH RESOURCES AND SERVICES	
Hospital(s) Name(s) Ascension Saint Alexius	
Prioritized Health Need #2 Mental Health	
Objective By June 30, 2028, increased access to mental health assessments, services, education and resources through the Emergency Department (ED) Annex Clinical Support initiative.	
Strategy Emergency Department (ED) Annex	
Collaborators	Resources
Other Ascension hospital(s): Ascension Alexian Brothers Behavioral Health Hospital	Other Ascension hospital(s): staff time donated, education collateral, marketing resources, and others
Collaborators: TBD	Collaborators: TBD
Consultants: N/A	Consultants: N/A
Other non-profit hospital: N/A	Other non-profit hospital: N/A
Budget <ul style="list-style-type: none"> • Cost of in-kind staff support • Cost of in-kind resources & materials 	
ACTION STEPS	ROLE/OWNER
Appoint Associate Lead for this Strategy	Ascension Alexian Brothers Behavioral Health Hospital & Ascension Saint Alexius
Identify internal resources for supporting ED Annex	Ascension Saint Alexius ED, Ascension Alexian Brothers Behavioral Health Hospital
Provide orientation on workflows that allow for more access, safety and privacy	Ascension Saint Alexius ED, Ascension Alexian Brothers Behavioral Health Hospital
Orient and train internal team members on services and workflow	Ascension Saint Alexius ED, Ascension Alexian Brothers Behavioral Health Hospital
Monitor work, evaluate progress, and report outcomes	Ascension Illinois Community Health
ANTICIPATED IMPACT	
The anticipated impact of these actions is increased access to mental health services and resources for individuals that present to the ED experiencing mental health symptoms or crisis.	

STRATEGY#6: CHRONIC CONDITION SCREENING, EDUCATION AND AWARENESS	
Hospital(s) Name(s) Ascension Saint Alexius	
Prioritized Health Need #3 Chronic Disease	
Objective By June 30, 2028, there will be increased access to health screenings and education for community residents.	
Strategy Community & Faith Community Wellness Program	
Collaborators	Resources
Other Ascension hospital(s): Ascension Alexian Brothers, Ascension Alexian Brothers Behavioral Health Hospital	Other Ascension hospital(s): staff time donated, community investment, education collateral, marketing resources, and other supplies
Collaborators: Park Districts, Community-based organizations, Faith-based Institutions, Schools, Food Pantries, Townships	Collaborators: staff/volunteer time donated; space for events; promotion of events
Consultants: N/A	Consultants: N/A
Other non-profit hospital: N/A	Other non-profit hospital: N/A
Budget <ul style="list-style-type: none"> • Cost of in-kind staff support • Cost of in-kind resources & materials 	
ACTION STEPS	ROLE/OWNER
Appoint Associate Lead for this Strategy	Ascension Saint Alexius
Identify internal resources for supporting community wellness programming	Ascension Illinois Community Health, Ascension Saint Alexius
Identify external partners serving low-income and/or at risk persons that need community health screening and health education services	Ascension Illinois Community Health, Ascension Saint Alexius
Establish community calendar of health screening and health education events including dates, times, and locations	Ascension Illinois Community Health
Promote awareness of health education and screenings via flyers, social media, e-newsletters, meeting with community partners	Ascension Illinois Community Health, Ascension Illinois External Communications
Monitor work, evaluate progress, and report outcomes	Ascension Illinois Community Health
ANTICIPATED IMPACT	
The anticipated impact of these actions is increased access to health screening services and increased knowledge of chronic condition risk factors among high risk populations.	

STRATEGY #7: FOOD ACCESS ASSISTANCE	
Hospital(s) Name(s) Ascension Saint Alexius	
Prioritized Health Need #4 Social Determinants of Health: (SDoH: Food Security)	
Objective By June 30, 2028, increase community support for local food pantries, increase food access partnerships and increase the number of individuals provided with food access assistance.	
Strategy Local Food Assistance Support & Partnerships <ul style="list-style-type: none"> • Micropantry • School Backpack Program • Mobile Produce Program of Faith & Food Initiative • Community Investment Program 	
Collaborators	Resources
Other Ascension hospital(s): Ascension Alexian Brothers, Ascension Alexian Brothers Behavioral Health Hospital, Ascension Saint Joseph Hospital Chicago	Other Ascension hospital(s): staff time donated, community investment, education collateral, marketing resources, and others
Collaborators: Greater Chicago Food Depository, Northern Illinois Food Bank, Willow Creek Care Center, local food pantries, Faith Based Institutions	Collaborators: staff/volunteer time donated; resources/materials; promotion of programs
Consultants: N/A	Consultants: N/A
Other non-profit hospital: N/A	Other non-profit hospital: N/A
Budget <ul style="list-style-type: none"> • Community Investments • Cost of in-kind staff support • Cost of in-kind resources & materials 	
ACTION STEPS <i>Micropantry</i>	ROLE/OWNER
Appoint an Associate Lead for this strategy	Ascension Illinois Community Health
Identify food-drive event dates	Ascension Saint Alexius Volunteer Department
Identify potential community partners to support maintenance of MicroPantry	Ascension Illinois Community Health
Provide funding support for local community food access programs and initiatives	Ascension Saint Alexius
Monitor work, evaluate progress, report outcomes	Ascension Illinois Community Health
ACTION STEPS <i>School Backpack Program</i>	ROLE/OWNER
Appoint an Associate Lead for this strategy	Ascension Illinois Community Health
Identify local schools that will participate in program	Ascension Illinois Community Health and Northern Illinois Food Bank
Provide funding support for program	Ascension Saint Alexius
Monitor work, evaluate progress, report outcomes	Ascension Illinois Community Health
ACTION STEPS <i>Mobile Produce Program of Faith & Food Program</i>	ROLE/OWNER
Appoint an Associate Lead for this strategy	Ascension Illinois Community Health

Identify local faith institutions that will participate in program	Ascension Illinois Community Health, Ascension Saint Alexius
Provide funding and distribution support for program	Ascension Saint Alexius
Monitor work, evaluate progress, report outcomes	Ascension Illinois Community Health
ACTION STEPS <i>Community Investment Program</i>	ROLE/OWNER
Appoint an Associate Lead for this strategy	Ascension Illinois Community Health
Identify local food pantries in need of financial support	Ascension Illinois Community Health, Ascension Saint Alexius Community Investment Committee
Identify internal resources to support food pantry initiatives (i.e. food drives, nutrition education and training)	Ascension Illinois Community Health, Ascension Saint Alexius
Monitor work, evaluate progress, report outcomes	Ascension Illinois Community Health, Ascension Saint Alexius
ANTICIPATED IMPACT	
The anticipated impact of these actions is increased access to healthy food and reduced food insecurity.	

STRATEGY #8: HOUSING ASSISTANCE	
Hospital(s) Name(s) Ascension Saint Alexius	
Prioritized Health Need #4 Social Determinants of Health: (SDoH: Housing & Transit)	
Objective By June 30, 2028, increase support for individuals in need of housing assistance in the Ascension Saint Alexius community.	
Strategy Local Housing Assistance Support & Partnerships	
Collaborators	Resources
Other Ascension hospital(s): Ascension Alexian Brothers, Ascension Saint Joseph Hospital Chicago	Other Ascension hospital(s): staff time donated, community investment
Collaborators: Fellowship Housing, Little Sisters of the Poor St. Joseph Home for the Elderly	Collaborators: staff/volunteer time donated, data
Consultants: N/A	Consultants: N/A
Other non-profit hospital: N/A	Other non-profit hospital: N/A
Budget <ul style="list-style-type: none"> • Annual community investments • In-kind support 	
ACTION STEPS	ROLE/OWNER
Appoint an Associate Lead for this strategy	Ascension Illinois Community Health
Identify local housing assistance partners including those in need of financial support	Ascension Illinois Community Health, Ascension Saint Alexius Community Investment Committee
Identify internal resources to support local housing assistance initiatives	Ascension Illinois Community Health, Ascension Saint Alexius
Monitor work, evaluate progress, report outcomes	Ascension Illinois Community Health, Ascension Saint Alexius
ANTICIPATED IMPACT	
The anticipated impact of these actions is to increase access to safe and affordable housing to improve overall health.	

STRATEGY #9: TRANSPORTATION ASSISTANCE	
Hospital(s) Name(s) Ascension Saint Alexius	
Prioritized Health Need #4 Social Determinants of Health: (SDoH: Housing & Transit)	
Objective By June 30, 2028, increase support for individuals in need of transportation assistance in the Ascension Saint Alexius community.	
Strategy LYFT Concierge Services Partnership	
Collaborators	Resources
Other Ascension hospital(s): Ascension Alexian Brothers, Ascension Saint Joseph Hospital Chicago	Other Ascension hospital(s): staff time donated, community investment
Collaborators: Lyft Concierge Services	Collaborators: transportation services & platform, data
Consultants: N/A	Consultants: N/A
Other non-profit hospital: N/A	Other non-profit hospital: N/A
Budget* <ul style="list-style-type: none"> Concierge Service Fees 	
ACTION STEPS	ROLE/OWNER
Appoint an Associate Lead for this strategy	Ascension Illinois Community Health
Identify patients (i.e., uninsured, underinsured, VA, Medicaid, Medicare, etc.) in need of transportation assistance	Ascension Saint Alexius Care Management
Cover costs of Lyft Concierge Services (LCS) monthly/annual service fees for identified patients within parameters allowed under applicable law	Ascension Saint Alexius
Monitor work, evaluate progress, report outcomes	Ascension Illinois Community Health, Ascension Saint Alexius
ANTICIPATED IMPACT	
The anticipated impact of these actions is increased access to healthcare services by eliminating transportation barriers.	

Evaluation

Ascension Saint Alexius will develop a comprehensive measurement and evaluation process for the implementation strategy. The Hospital will monitor and evaluate the action plans outlined in this plan for the purpose of reporting and documenting the impact these action plans have on the community. Ascension Saint Alexius uses a tracking system to capture community benefit activities and implementation. Data will be aggregated into an annual Community Benefit report made available to the community to ensure accountability.